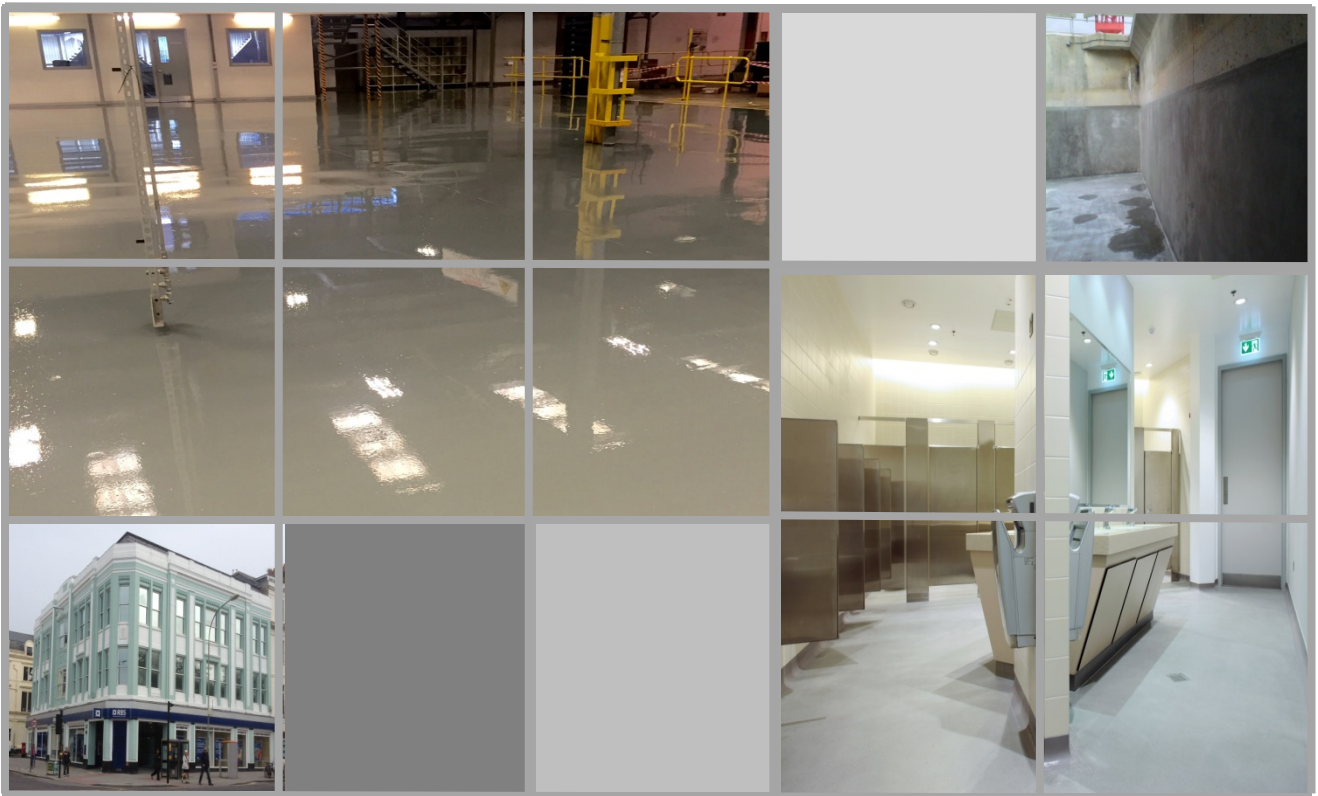




REMMERS UK
BUILDING PRODUCTS CATALOGUE
2016



Tel: 01293 594010

Fax: 01293 594037

Email: sales@remmers.co.uk

Contents

1	Cleaning	
	6	Rotec Mechanical Cleaning
	6-7	Remmers Chemical Products
	7	Intachem Chemicals
2	Concrete Repair & Protection	
	8	Steel Reinforcement Primers and Bonding Agents
	8	Crack Injection
	8-10	Grouts & Repair Mortars
	10	Impregnations
	11	Primers for Coatings
	11-12	Facade Coatings
	12	Anti-Graffiti Coatings
3	Stone & Masonry Restoration	
	13	Consolidation
	13	Repair & Strengthening
	14-15	Mortars
	16	Impregnations
4	Specialist Renders	
	17	Specialist Renders
5	Waterproofing and Damp-Proofing	
	18	Structural Waterproofing- Internal
	19	Injection
	19-21	Structural Waterproofing – External
	21	Other
6	Flooring	
	22-23	Floor Seals and Primers
	24	Coatings
	25	Flow Systems
	26-27	Screeds and Binders
	27-28	Fixing Layers and Seal Coats
	28	Anti-Static Systems
	29	Repair Products
	29-31	Flakes & Aggregates
	32-33	Ancillaries
7	Joint Sealants	
	34	Joint Sealants
8	Tools	
	35-36	Tools
9	Additional Information	
	37	Consumptions Guide
	37	Dew Point Table
	38	Sales Order Form
	39	General Information
	39	Carriage Charges
	40-41	Terms and Conditions of Sale

ALPHABETICAL INDEX

Product

A

Accelerator D40	-	32
Accelerator PH	-	24
Accelerator UV	-	32
Add 250	-	32
Add Mix 01	-	32
AGE	-	6
All White Microfibre Sleeve	-	35
Arte Mundit	-	7
Arte Mundit Eco	-	7
Artico Color	-	27

B

Betofix Filler	-	9
Betofix HB	-	8
Betofix HQ2	-	9
Betofix HQ3	-	9
Betofix HQ3 Plus	-	9
Betofix HQ6	-	9
Betofix QR2	-	9
Betofix R2	-	9
Betofix R4	-	9
Betofix R4 EM	-	10,26
Betofix R4 SR	-	10
Betofix RM	-	9
BFA	-	10
Bonding Layer EP 2 K	-	8
BT200	-	7

C

Ceramix 03	-	30
Ceramix 07	-	30
Ceramix 12	-	30
Ceramix 20/30	-	30
Clamp Trowel	-	35
Clinker Cleaner AC	-	6
Colorid Flakes Collection	-	29
Combi WR	-	6
Compound Mortar	-	17
Concrete & Screed Strengthener	-	22
Concrete Acrylic	-	11
Copper Tape	-	28
Coving Trowel	-	35

D

Deep Primer W	-	18
DS Banding	-	20
DS Banding Clips	-	20
DS System Protection	-	20

E

Elastoflex Facade Paint	-	12
Elastoflex Filler Paint	-	11
ElastogROUT 1K	-	18
ElastogROUT 2K	-	18
EP Screed Aggregate	-	30
Epoxy BS 2000 New	-	22,24
Epoxy BS 2000 Transparent New	-	22
Epoxy BS 3000 AS New	-	28
Epoxy BS 3000 M New	-	24
Epoxy BS 3000 SG New	-	24,25
Epoxy BS 4000	-	25
Epoxy Conductive	-	28
Epoxy CR 100	-	22
Epoxy CR Color	-	24
Epoxy Crack Fix	-	19
Epoxy ESD Color 3K	-	28
Epoxy ESC 100	-	27

Product

Epoxy FAS 100	-	22
Epoxyflex Coating PH	-	24
Epoxy MT 100	-	22
Epoxy Primer PF New	-	23
Epoxy PH Color	-	24
Epoxy Quick 100	-	22
Epoxy Quick Fix	-	29
Epoxy Roller Sleeve	-	35
Epoxy Rubber Grouting Trowel	-	35
Epoxy SiC Color Top	-	24
Epoxy ST 100	-	22
Epoxy ST 100 LV	-	22
Epoxy ST 100 TX	-	27
Epoxy Universal	-	18
Epoxy UV 100	-	23,27
Epoxy UV 100 TX	-	27
Epoxy WHG Color	-	24
Epoxy WHG Color AS	-	28

F

Facade Cleaning Paste	-	6
Fine Render	-	17
Floormix Aggregate	-	31
Floormix DQ Aggregate	-	31
Floormix DQ S Aggregate	-	31
Funcosil C40	-	10
Funcosil FC	-	16
Funcosil MCI	-	10
Funcosil OFS	-	16
Funcosil SL	-	16
Funcosil SNL	-	16
Funcosil Facade Test Kit	-	35
Funcosil WS	-	16

G

Gloves	-	35
Graffiti Protector	-	12
Green Growth Remover	-	6

H

Haftfest	-	29
HD400	-	7
Heucosin Special	-	32

I

IG Acryl 3K	-	19
Ilack ST	-	20
Impregnation Primer	-	10
Infra-Red Surface Thermometer	-	35
Injection Cream	-	19
Injection Nozzle	-	35
Injection Resin 100	-	8,19
iQ Therm	-	17
IR Epoxy 360	-	8,19
IR PUR 2K 150	-	19
IR PUR 250	-	19

J

Joint Mortar	-	13,15
--------------	---	-------

K

Kiesol	-	18,19
Kiesol C	-	19
KSE 100	-	13
KSE 300	-	13

ALPHABETICAL INDEX

Product

L		
LC500	-	7
Liquid Foil	-	21
M		
Matchstik Colour Detector	-	35
Mixing Paddles	-	35
Mould Protect	-	21
MS 150	-	34
Multi Filler	-	8
Multiplan	-	26
Multiplan SiC	-	26
Multi-Sil	-	34
Multi-Sil NUW	-	34
Multi Tight 2K	-	20
O		
Optiplan Base	-	26
OS Concre Fill	-	11
P		
Playsafe	-	26
PE Fleece 100gsm	-	32
Pore Filler	-	28
Primer PUR	-	34
Primer SV	-	11
Profi Tight 2K	-	20
PU AW	-	34
PU Roller Sleeves	-	35
PUR Aqua Top M	-	27
PUR Aqua Top 2K M+	-	28
PUR Aqua Top 1K	-	27
PUR Aqua Top 500 2KM	-	28
PUR Aqua Color Top 2K M	-	28
PUR Color Top 2KS	-	28
PUR Deco Color Bright	-	25
PUR EG 120	-	33
PUR Grip 100	-	27
PUR Indu Color D40	-	25
PUR Indu Color D60	-	25
PUR Rubber Concrete	-	26
PUR Top Accelerator	-	32
PUR Top M	-	27
PUR Top M Plus	-	27
PUR ST 100	-	27
PUR Uni Color New	-	25
PUR UV 100	-	27
Q		
Quartz 01/03	-	31
Quartz 03/06	-	31
Quartz 07/12	-	31
Quartz 20/30	-	31
Quartz 290 SE	-	31
Quartz Primer	-	11
R		
Rapid Hardener	-	18
Reinforcement Fabric 2.5/100	-	21
Reinforcement Fabric 2.5/25	-	21
Reinforcement Fabric 5/100	-	21
Remmers Crete HF	-	26
Remmers Crete RT	-	26
Remmers Crete SL	-	25
Remmers Crete TF	-	24
Remmers Crete WR	-	26

Product

Remmers Playsafe	-	26
Repair Mortar EP 2 K	-	8,29
Repellent Render	-	18
Repair Mortar LW EP 2 K	-	8
Restoration Mortar (normal)	-	14
Restoration Render	-	17
Rofalin Acrylic	-	11
Roller Frame/Cage (double arm)	-	35
Roller Handle (single sided)	-	35
Rotec Glass Powder	-	6
Rotec Whirl Jet 25 Litre System	-	6
Rubber Crumb Underlay	-	33
Rust Inhibitor EP 2 K	-	8
Rust Inhibitor M	-	8
S		
Salt Inhibitor	-	18
Sealant Gun	-	36
Sealing Cove Filler Rapid	-	18
Selectmix 0/10	-	29
Selectmix FF	-	29
Selectmix 25	-	29
Selectmix RMS	-	29
Selectmix SBL	-	29
Silicate Paint D	-	12
Silicate Primer D	-	11
Silicate Strengthener	-	11
Silicone Primer P	-	34
Silicone Resin Filling Paint LA	-	11
Silicone Resin Paint LA	-	12
Slurry Brush	-	36
Spiked Rollers	-	36
Spiked Shoes (pair)	-	36
Spiral Anchor	-	13
Spiral Anchor Mortar	-	13
Squeegee	-	36
Stopaq	-	19
Sulfatex Grout	-	18
Sulfatex Rapid Filler	-	18
T		
Telescopic Handles	-	36
Textured Rollers	-	36
Thermo Hygrometer	-	36
Thinner V 100	-	32
Thinner V 101	-	32
Thinner V 103	-	32
Toothed Blade Holder	-	36
Toothed Blades	-	36
Toothed Rubber Blades	-	36
Trowels	-	35
Traffic Film Remover (TFR)	-	6
U		
Undercoat Render	-	17
Universal Restoration Render	-	17
UN700 PW PUR Adhesive	-	33
Underwater Primer	-	34
W		
Waterproofing Filler	-	18
Waterstop B200/300	-	20
Waterstop VF	-	20
WHG TX	-	32
X, Y, Z		

CLEANING

Product	Coverage (per coat) kg/m ² or ltr/m ²	Prod.No	Stock	Unit per pallet	Pack size	Yield m ²
1-Rotec Mechanical Cleaning						
Rotec® Whirl Jet 25 Litre System Includes the 18 litre whirl jet unit, nozzle, high pressure equipment & hoses. Purchase aftercooler separately.		5235	△	1		
Rotec® Glass Powder Blasting material used with the Rotec Whirl Jet equipment to gently clean brick, natural stone, timber & concrete substrates. Glass powder available in range sizes.	Granulometry of Glass Powder 0.04-0.09 mm 0.09-0.25 mm 0.50-1.40 mm	5280 5278 5277	△ △ △	42 42 42	25 kg 25 kg 25 kg	
2- Remmers Chemical Products						
Combi WR 1 component acid based cleaner. Suitable for sandstone, limestone, brick, concrete natural stone & tiles.	0.3-0.5 kg/m ²	0675	○	44 24	Bucket 5 kg 30 kg	16.7 100.0
Clinker Cleaner AC 1 component acid based cleaning powder. It is dissolved in water to provide a solution suitable for removing lime & cement laitance on fair faced masonry.	1 kg of powder for 20 m ²	0672	○	12/box 44 24	Bucket 1 kg 5 kg 10 kg	20.0 100.0 200.0
Traffic Film Remover (TFR) 1 component water based biodegradable cleaner & degreaser. Dilute with water to remove dirt, oil & grease. Can be used manually or with high pressure / steam cleaning equipment.	Dilute up 20:1	0671	○	84	Bucket 5 kg	100.0
Green Growth Remover Environmentally sympathetic cleaner for removing unsightly green growth from all indoor and outdoor surfaces. No active chlorine, just spray on.	0.2 l/m ²	0676	●	6/box 4/box	Bucket 1 ltr 2.5 ltr	5.0 12.5
Facade Cleaning Paste 1 component water based thixotropic façade cleaning paste. Suitable for application on brick, natural stone & cementitious based substrates.	0.1 kg/m ²	0666	●	12/box 56 16	Bucket 1 kg 5 kg 30 kg	10.0 50.0 300.0
AGE 1 component biodegradable stripping paste. Removes paints, resins, varnishes, lacquers & polishes from wood, metal & cementitious substrates as well as reacted silanes/siloxanes from metal or plastic.	0.3-0.5 l/m ²	1368	○	12/box 72 14	Bucket 0.75 ltr 5 ltr 25 ltr	2.5 16.7 83.3

CLEANING

Product	Coverage (per coat) kg/m ² or ltr/m ²	Prod.No	Stock	Unit per pallet	Pack size	Yield m ²
2- Remmers Chemical Products						
<p>Arte Mundit</p> <p>Brush-on peel-off specialist poultice for water free internal cleaning of stone. Available in various grades. Ammonia free.</p> <p>Type I is one component. Types II, III & V are two component, comprising of base and activator.</p> <p>Samples available upon request.</p>	<p>I</p> <p>II</p> <p>1 kg/m² smooth surfaces III</p> <p>3 kg/m² carved surfaces V</p>	<p>222020</p> <p>222022-25</p>	○		<p>Bucket 15 kg 16.01 kg 17.86 kg 18.84 kg</p>	Varies
<p>Arte Mundit Eco</p> <p>Single component cleaning paste for the cleaning of internal and external* surfaces such as stone, brick, marble and concrete. Based on natural raw materials. EDTA free.</p> <p>Samples available upon request.</p> <p>* subject to on site trial</p>	<p>Approx.</p> <p>0.7 – 1kg/m² smooth surfaces Up to 3kg/m² on carved surfaces</p>	222030	○		<p>Bucket 15kg</p>	Varies
3- Intachem Range						
<p>BT200</p> <p>1 component water based biodegradable cleaner. It can be used to remove dirt, carbon, algae & staining from brick & terracotta.</p>	0.25 l/m²	260277	○	24	<p>Drum 25 ltr</p>	100.0
<p>HD400</p> <p>1 component water based viscous biodegradable heavy duty degreasant liquid. It is used to break down & remove black carbon dirt, oils & grease from any masonry surface.</p>	0.25 l/m²	260279	○	24	<p>Drum 25 ltr</p>	100.0
<p>LC500</p> <p>1 component water based biodegradable cleaning liquid. It can be used to clean dirt, hydrocarbon and sulphurous deposits off limestone, marble & precast concrete.</p>	0.25 l/m²	260278	○	24	<p>Drum 25 ltr</p>	100.0

CONCRETE REPAIR & PROTECTION

Product	Coverage (per coat) kg/m ² or ltr/m ²	Prod.No	Stock	Unit per pallet	Pack size	Yield m ²
1- Steel Reinforcement Primers and Bonding Coats						
Rust Inhibitor M 2 component cementitious bar primer. Provides long term corrosion protection to steel reinforcement. Mix with Betofix mortar to make a slurry.	0.3 kg/m ²	0919	●	24/box 90	Drum 1 kg 5 kg	3.3 16.7
Rust Inhibitor EP 2 K 2 component epoxy resin based primer containing rust inhibiting pigments. Provides long term corrosion protection to steel reinforcement.	0.35 kg/m ²	0920	●	12/box	Tin 0.5 kg	1.4
Bonding Layer EP 2 K 2 component epoxy resin based bonding layer. It is used as a bonding layer beneath Epoxy Repair Mortars.	0.5 kg/m ²	0900	●	10/box	Tin 1 kg	2.0
Betofix HB 1 component cementitious, polymer modified bonding slurry. Use as part of the Betofix R4 EM system.	1.1 kg/m ² /mm	1082	○	30	Bag 25 kg	Varies
2- Crack Injection						
Injection Resin 100 2 component epoxy based very low viscosity injection resin. Suitable for pressure injection applications.	1.1 kg/ltr	0944	○	200 60	Tin 1 kg 5 kg	Varies
IR Epoxy 360 2 component, low viscosity epoxy injection resin. Cures to form a high strength, rigid resin. Ideal for bonding delaminating screeds, grouting cracks in concrete and general injection repair works.	Varies	6872	○	300 84	Can 1 kg 7 kg	Varies
3- Grouts & Repair Mortars						
Repair Mortar LW EP 2 K 2 component epoxy based lightweight repair mortar with fast curing, high build and shrinkage free characteristics. Can be used for overhead repairs.	0.93 kg/m ² /mm Concrete Grey (inherent colour)	0941	●	90	Tin 3 kg	3.2
Repair Mortar EP 2 K 2 component epoxy based repair mortar with fast curing, high strength & good chemical resistance characteristics. Wide range of uses include high strength repair mortar, bedding mortar for machinery bases and embedding anchors.	1.7 kg/m ² /mm	0943	●	75	Tin 5 kg	3.0
Multi Filler 1 component cementitious multipurpose repair, filling and levelling mortar. Fast curing, white, non shrink, single layer thicknesses of 0 - 80mm. Overcoatable in 4 hours, suitable for interior & exterior use.	1 kg/m ² /mm	2809	○	45 40	Bucket 5 kg Bag 20 kg	5.1 20.4

CONCRETE REPAIR & PROTECTION

Product	Coverage (per coat) kg/m ² or ltr/m ²	Prod.No	Stock	Unit per pallet	Pack size	Yield m ²
3- Grouts & Repair Mortars						
Betofix QR2 1 component cementitious grout suitable for use in a wide range of flowable repairs. High early strength.	2 kg/ltr	1063	○	40	Bag 25 kg	13.1 litres
Betofix HQ2 1 component cementitious high early strength mortar. Use as a general packing/filling mortar between prefab concrete elements. Achieves >20N/mm ² compressive strength after 24 hours.	2 kg/m ² /mm	0554	△	30	Bag 25 kg	Varies
Betofix HQ3 1 component cementitious high strength grout. Achieves >50N/mm ² compressive strength after 24 hours and >100N/mm ² after 28 days. Ideal for use in all civil engineering applications.	2.1 kg/litre void	1064	△	36	Bag 25 kg	Varies
Betofix HQ3 Plus 1 component cementitious ultra high performance grout. Achieves >65N/mm ² compressive strength after 24 hours and >140N/mm ² after 28 days. Ideal for use in all civil engineering applications especially rail and wind turbine.	2.1 kg/litre void	0553	△	36	Bag 25 kg	Varies
Betofix HQ6 1 component cementitious grouting concrete. For general use in grouting/bedding and concrete repairs. Max. aggregate size 6mm. Compressive strength >60N/mm ² after 28 days.	2.1 kg/litre void	0556	△	36	Bag 25 kg	Varies
Betofix RM 1 component cementitious multipurpose repair and levelling mortar. Very fast curing, single layer thicknesses of 0 - 50mm, suitable for overhead repairs, can be painted in 2 hours. No substrate primer required.	1.2 kg/m ² /mm	1092	●	36	Bag 25 kg	20.8
Betofix R2 High strength multi-purpose high build concrete repair mortar. Fast curing. DIN EN 1504-3 Class R2.	1.2 kg/m ² /mm	1093	●	30	Bag 25 kg	20.00
Betofix Filler 1 component cementitious repair mortar. DIN EN 1504-3 Class R3.	1.75 kg/m ² /mm	1008	●	30	Bag 25 kg	Varies
Betofix R4 Highest strength hand placed repair mortar, fibre reinforced. DIN EN 1504-3 Class R4.	1.8 kg/m ² /mm	1096	●	36	Bag 25 kg	16.6

CONCRETE REPAIR & PROTECTION

Product	Coverage (per coat) kg/m ² or ltr/m ²	Prod.No	Stock	Unit per pallet	Pack size	Yield m ²
3- Grouts & Repair Mortars						
Betofix R4 SR High performance structural repair mortar for use across a wide range of civil engineering applications. High resistance to chloride penetration, chemical attack and carbonation. DIN EN 1504-3 Class R4.	1.8 kg/m ² /mm	1084	○	36	Bag 25 kg	16.6
Betofix R4 EM High strength mortar for repairing and screeding floors. Can be applied at a thickness of 15-80mm. Can also be used to embed anodes in a cathodic protection system. DIN EN 1504-3 Class R4.	2 kg/m ² /mm	1086	△	36	Bag 25 kg	Varies
4- Impregnations						
Funcosil C40 1 component silane water based cream for the impregnation of reinforced concrete structures. Applied in one single application to waterproof new and old reinforced concrete. Fast & highly economical. EN 1504 Compliant.	0.2 l/m ²	0704	○	42 24	Bucket 5 ltr 15 ltr	25.0 90.0
Funcosil MCI 1 component water based migratory corrosion inhibitor suitable for use on reinforced concrete structures. Can be applied by brush, roller or spray.	0.27 l/m ²	260281	●		Bucket 1 ltr 5 ltr 25 ltr	3.7 18.5 92.6
BFA Bactericidal, Fungicidal and Algaecidal water based impregnation and wash for inside and outside use. Highly effective control of growth to walls, floors and facades of all types.	0.2 l/m ²	0673	●	84 24	Drum 5 ltr 30 ltr	25.0 150.0
Impregnation Primer 1 component alkyl alkoxy siloxane based primer. Use as an impregnation and water repellent primer on cementitious substrates beneath Remmers facade coatings.	0.2 – 0.4 l/m ²	0642	●	84 24	Tub 5 ltr 30 ltr	25.0 150.0

CONCRETE REPAIR & PROTECTION

Product	Coverage (per coat) kg/m ² or ltr/m ²	Prod.No	Stock	Unit per pallet	Pack size	Yield m ²
5- Primers for Coatings						
Silicate Primer D 1 component silicic acid water based hydrophobizing primer. Used as a water repellent primer underneath Silicate Paint D.	0.1-0.2 l/m ²	0624	△	84 24	Tub 5 ltr 30 ltr	50.0 300.0
Silicone Resin Filling Paint LA 1 component silicone based, fibre reinforced filled coating. Can be used as a primer or as an intermediated coat beneath Silicone Paint LA.	0.2-0.5 kg/m ² White	0560	○	24	Bucket 20 kg	66.7
Quartz Primer 1 component water based primer and bonding layer. Used as a primer to provide a high level of adhesion onto smooth concrete / non absorbent surfaces. Can then be overcoated with subsequent render / coatings.	0.25 l/m ²	2810	○	24	Tub 5 ltr 15 ltr	60.0
Silicate Strengthener 1 component water based clear primer. Can be applied by brush, roller or injection onto mineral substrates i.e. concrete brickwork to strengthen the surface (or structure if injected).	Refer to Tech Data Sheet	1072	△	90 24	Tub 5 kg 30 kg	Varies
Primer SV 1 component solvent based primer. Highly penetrative and can be used beneath Remmers acrylic and silicone based façade coatings.	0.2 l/m ²	6438	○	84 24	Tub 5 ltr 15 ltr	
OS Concre Fill 1 component acrylic based, fibre reinforced filled coating. Can be used as a primer or as an intermediate coating beneath Concrete Acrylic or Elastoflex Façade Paint.	0.4-0.7 l/m ²	6490	○	24	Tub 15 ltr	Varies
Elastoflex Filler Paint 1 component water based acrylic highly elastic intermediate coating. Used as an intermediate coating in the Remmers Elastoflex System. Can be filled with fine dry quartz to produce a filling paste (@20% by weight).	0.3-0.8 l/m ² Antique White	2989	●	24	Bucket 15 ltr	50.0
6- Façade Coatings						
Concrete Acrylic 1 component water based acrylic coating. It has excellent anticarbonation characteristics, resistance to weathering & is water vapour permeable. In can tinting to most colours.	0.1-0.2 l/m ² White Colour Special Colours	6500 6529	● ○	42 24	Bucket 5 ltr 15 ltr	50.0 150.0
Rofalin Acrylic 1 component water based acrylic silk gloss elastic coating. It has excellent anticarbonation characteristics, is highly elastic, fast curing & suitable for application on to many substrates including wood, concrete & metal (galvanized). Water vapour permeable. In can tinting to most colours.	0.1-0.2 l/m ² White Colour Special Colours	2330 2343	○ ○	96 64 45 22	Tin 2.5 ltr 5 ltr 10 ltr 20 ltr	25.0 50.0 100.0 200.0

CONCRETE REPAIR & PROTECTION

Product	Coverage (per coat) kg/m ² or ltr/m ²	Prod.No	Stock	Unit per pallet	Pack size	Yield m ²
6- Facade Coatings						
<p>Elastoflex Facade Paint</p> <p>1 component water based acrylic highly elastic coating. It has excellent anticarbonation characteristics, resistance to weathering, crack bridging ability and is water vapour permeable. In can tinting to most colours.</p>	<p>0.25 l/m²</p> <p>Colour Collection Special Colours</p>	<p>2976 2978</p>	<p>○ ●</p>	<p>42 24</p>	<p>Bucket 5 ltr 15 ltr</p>	<p>60.0</p>
<p>Silicone Resin Paint LA</p> <p>1 component water based silicone matt paint. Highly resistant to weathering, vapour permeable & water repelling. Suitable for application onto stone, concrete & render. In can tinting to most colours.</p>	<p>0.3-0.5 l/m²</p> <p>White Clear Special Colours</p>	<p>6400 6410 6429</p>	<p>● △ ○</p>	<p>48 24</p>	<p>Bucket 5 ltr 15 ltr</p>	<p>25.0 75.0</p>
<p>Silicate Paint D</p> <p>1 component water based silicate paint with a quartz texture. Highly permeable to water vapour and carbon dioxide. Suitable for use on cementitious substrates. In can tinting to most colours. Fine (sprayable) grade available upon request.</p>	<p>0.2 l/m²</p> <p>White Special Colours</p>	<p>0630 0634</p>	<p>△</p>	<p>24</p>	<p>Bucket 15 ltr</p>	<p>75.0</p>
7- Anti-Graffiti Coatings						
<p>Graffiti Protector</p> <p>1 component water based anti-graffiti impregnation. Suitable for application onto concrete, brick, stone & render substrates. It forms a sacrificial layer that can be removed using hot water under high pressure.</p>	<p>0.1-0.8 l/m²</p>	<p>0685</p>	<p>○</p>	<p>90 24</p>	<p>Drum 5 ltr 30 ltr</p>	<p>50.0 300.0</p>



STONE & MASONRY RESTORATION

Product	Coverage (per coat) kg/m ² or ltr/m ²	Prod.No	Stock	Unit per pallet	Pack size	Yield m ²
1-Consolidation						
KSE 100 1 component solvented silicic acid ester based strengthener. With a low gel deposit rate of 10% (100g per litre) it is also highly penetrative and has excellent resistance to weathering.	Varies dependent upon substrate porosity	0719	△	84 24	Tin 5 ltr 30 ltr	Varies
KSE 300 1 component silicic acid ethylester based strengthener. With a high gel deposit rate it is also highly penetrative with excellent resistance to weathering. Suitable for application on cementitious historic renders, sandstone, brick & terracotta.	Varies dependent upon substrate porosity	0720	△	84 24	Tin 5 ltr 30 ltr	Varies
2 – Repair & Strengthening						
Spiral Anchor Stainless steel twisted anchor for embedding into brickwork walls.	ø 6 mm - 1000mm length ø 8 mm - 1000mm length ø 6 mm - 10m roll ø 8 mm - 10m roll	4331 4334 4325 4326	△ △ △ △	500 500 40 40	1m length 1m length 10m roll 10m roll	1m 1m 10m 10m
Spiral Anchor Mortar 1 component cementitious mortar for bedding Spiral Anchors into brickwork walls. 2 strength grades available: 20N/mm ² = M20 30N/mm ² = M30	1.7 kg/ltr Cavity Void	M20 - 1028 M30 - 1030	△ △	30 30	Bag 25 kg Bag 25kg	
Joint Mortar Factory-mixed, dry mortar made of cementitious raw materials. For masonry work joints from 8-30 mm. High quality binder with a low free alkali content. Good adhesion to the sides of joints. For new joints and for repairing mortar joints in facades. Set up of trial surface is recommended. Strength, granulation and colour should be selected to match the substrate. Hydrophobic and custom formulation available upon request and subject to minimum order quantities. Contact Remmers UK Technical Department for more information.	The following special variations are available: Strength Soft (w): <8 N/mm ² Normal (n): approx >10-12 N/mm ² Granulation Fine (1.0) <1.0 mm Medium (2.0) <2.0 mm Colour According to sample or colour number. Along with the Art. No. each order must also state strength and granulation as follows (the colour can be given or will be determined at the plant when a sample is sent): n / 1.0 / 069 strength grain colour Special Colour Standard colour – antique white n/1.0/003 To determine the colour, send in a sample (stone or old joint material) or select from the Remmers colour card or the NCS scale. Other formulations (e.g. water repellence) are also possible. Application rate: Approx 1.6 kg/l cavity volume. On brick masonry work with 1cm wide and deep joints approx. 4 kg/m ² .	1041 1027	△ △	25	Bag 30 kg	16.0
Colour matching service available POA						

STONE & MASONRY RESTORATION

Product	Coverage (per coat) kg/m ² or ltr/m ²	Prod.No	Stock	Unit per pallet	Pack size	Yield m ²
Other grade of stone strengthener including elastified grades available on request						
3 - Mortars						
<p>Restoration Mortar (normal)</p> <p>Dry mortar made of cementitious raw materials. For restoration, replacement and reprofiling masonry as well as for the reproduction of ornamental building elements.</p> <ul style="list-style-type: none"> - High quality binder - Low free alkali content - Good adhesion to sides - Practically free of inherent stress. <p>Depending on the desired colour, the pigments added are resistant to lime and cement and are lightfast.</p> <p>Strength, granulation and colour are selected to match the substrate.</p>	<p>The following variations are available:</p> <p>Strength Soft (w): <8 N/mm² Normal (n): >13 N/mm²</p> <p>Granulation Fine (0.2) <0.2 mm Medium (0.5) <0.5 mm Coarse (2.0) <2.0 mm</p> <p>Colour According to sample or colour number.</p> <p>Along with the Art. No. Each order must also state strength and granulation as follows:</p> <p style="text-align: center;">n / 0.5 / 069 strength grain colour</p> <p>Standard Colours: MF 100586 medium grey MF 100003 antique white MF 100011 yellow-ochre MF 100015 reddish brown MF 100017 turquoise grey MF 100019 baumb, sandstone MF 100029 yellow-green MF 100030 beige MF 100034 brick red MF 100089 light beige MF 100094 anthracite MF 100124 marl MF 100202 light yellow MF 100214 coloured sandstone MF 100235 brick orange MF 100248 cream MF 100001 grey MF 100002 light grey MF 100169 Cotta sandstone MF 100194 grey-white</p> <p>Application rate: Depending on strength group between 1.3kg/l (soft) and 1.8kg/l (normal) / l cavity volume.</p>			30	Bag 30 kg	18.1 Varies with grade
					Colour matching service available POA	

STONE & MASONRY RESTORATION

Product	Coverage (per coat) kg/m ² or ltr/m ²	Prod.No	Stock	Unit per pallet	Pack size	Yield m ²
3 – Mortars cont:						
<p>Joint Mortar</p> <p>Factory-mixed, dry mortar made of cementitious raw materials. For masonry work joints from 8-30 mm.</p> <p>High quality binder with a low free alkali content. Good adhesion to the sides of joints.</p> <p>For new joints and for repairing mortar joints in facades.</p> <p>Set up of trial surface is recommended.</p> <p>Strength, granulation and colour should be selected to match the substrate.</p> <p>Hydrophobic and custom formulation available upon request and subject to minimum order quantities.</p> <p>Contact Remmers UK Technical Department for more information.</p>	<p>The following special variations are available:</p> <p>Strength Soft (w): <8 N/mm² Normal (n): approx >10-12 N/mm²</p> <p>Granulation Fine (1.0) <1.0 mm Medium (2.0) <2.0 mm</p> <p>Colour According to sample or colour number.</p> <p>Along with the Art. No. each order must also state strength and granulation as follows (the colour can be given or will be determined at the plant when a sample is sent):</p> <p>n / 1.0 / 069 strength grain colour</p> <p>Special Colour</p> <p>Standard colour – antique white n/1.0/003 To determine the colour, send in a sample (stone or old joint material) or select from the Remmers colour card or the NCS scale. Other formulations (e.g. water repellence) are also possible.</p> <p>Application rate: Approx 1.6 kg/l cavity volume. On brick masonry work with 1cm wide and deep joints approx. 4 kg/m².</p>			25	Bag 30 kg	16.0
		1041				
		1027				

STONE & MASONRY RESTORATION

Product	Coverage (per coat) kg/m ² or ltr/m ²	Prod.No	Stock	Unit per pallet	Pack size	Yield m ²
4 - Impregnations						
Funcosil FC 1 component hydrophobic impregnation cream on a silane/siloxane base. High performance water based repellent, suitable for brick, stone and render substrates. Applied by brush, roller or spray. Reduces heat loss through walls.	0.2 l/m ²	0711	●	42 24	Bucket 5 ltr 15 ltr	25.0 75.0
Funcosil SNL 1 component solvented hydrophobic impregnation on a siloxane base. High performance water repellent suitable for application on brick, sandstone, render & concrete.	0.3 – 1.5 l/m ²	0602	●	6/box 60 84 24	Tin 1 ltr 5 ltr 30ltr	6.7 33.3 200.0
Funcosil WS 1 component water based hydrophobic impregnation on a silane/siloxane base. Highly effective, environmentally friendly water repellent for use on all porous cementitious building materials.	0.5- 0.7 l/m ²	0614	○	84 24	Tin 5 ltr 30 ltr	10.0 60.0
Funcosil SL 1 component solvented hydrophobic impregnation on a siloxane base. Specifically formulated as a water repellent for Limestone.	0.2-0.7 l/m ²	0608	○	84 24	Tin 5 ltr 30 ltr	150.0
Funcosil OFS 1 component water based hydrophobic and stain blocking impregnation on a fluorinated co-polymer base. Highly effective repellent to water, oils & dirt. Suitable for interior and exterior use, on wall and floor areas.	0.2-0.8 l/m ²	0617	○	84 24	Tin 5 ltr 30 ltr	50.0 300.0

SPECIALIST RENDERS

Product	Coverage (per coat) kg/m ² or ltr/m ²	Prod.No	Stock	Unit per pallet	Pack size	Yield m ²
1 - Specialist Renders						
Typical						
iQ Therm Unique, two way vapour permeable internal wall insulation system. Enables achievement of latest U values.						
See iQ Therm price list for full details						
Undercoat Render 1 component cementitious prebagged levelling mortar. Suitable for hand or machine application, it is applied to brick or cementitious substrates as a filling or levelling mortar at 10-40 mm. It is salt storing & water vapour permeable.	10mm layer 9.5 kg/m ² (dry powder) Grey (inherent colour)	0401	○	42	Bag 20 kg	@10mm 2.1
Restoration Render 1 component high performance cementitious prebagged fibre reinforced lightweight white render. Suitable for interior & exterior application as an undercoat or finishing render, on cementitious, brickwork or blockwork substrates in single layers of up to 30 mm by hand or machine application. It is water vapour permable, inhibits salts and its low thermal conductivity assists in reducing condensation. Rapid grade available.	10mm layer 8.5 kg/m ² /mm (dry powder) Antique White (inherent colour)	0402	○	42	Bag 20 kg	@10mm 2.4
Universal Restoration Render 1 component high strength fibre reinforced render with high resistance to sulphates. 30mm can be applied in a single layer. WTA Approved	10.5 kg/m ² (per cm thick layer) Grey (inherent colour)	0416	△	42	Bag 20 kg	Varies
Compound Mortar 1 component cementitious prebagged mortar. Suitable for hand or machine application, it is applied to brick, stone or cementitious substrates as a preparation layer, providing a good sound mechanical key for subsequent Remmers renders. Fast setting version available.	1.2 kg/m ² /mm (dry powder) Antique White (inherent colour)	0517	○	30	Bag 25 kg	10.4
Fine Render 1 component cementitious prebagged white finishing render. Suitable for levelling over Restoration Render & Cementitious undercoat renders to provide a fine closed finish suitable for painting.	1.3 kg/m ² /mm (dry powder)	0408	○	30	Bag 25 kg	8.3

WATERPROOFING AND DAMP-PROOFING

Product	Coverage (per coat) kg/m ² or ltr/m ²	Prod.No	Stock	Unit per pallet	Pack size	Yield m ²
1. Structural Waterproofing - Internal						
Kiesol 1 component silicic based solvent free waterproofing liquid. Multipurpose use within the range of Remmers Waterproofing Systems.	Varies with application 0.2 kg/m ² (diluted at 1:1 with water)	1810	●	6/box 84 50 24	Tin 1 kg 5 kg 10 kg 30 kg	10.0 50.0 100.0 300.0
Salt Inhibitor "Masonry salt blocker". Reduces the transport of liquid and therefore the passage of masonry salts. Low alkali with strengthening effect.	0.4-0.6 kg/m ²	0674	○	84 24	Tin 5 kg 30 kg	12.5 75.0
Sulfatex Grout 1 component cementitious prebagged waterproofing slurry. Component of the Remmers Structural Waterproofing System. Suitable for application onto brickwork & cementitious based substrates. Approved for contact with potable water.	1.6 kg/m ² per coat Dry powder	0430	●	36	Bag 25 kg	12.5
Sulfatex Rapid Filler 1 component cementitious, prebagged waterproofing slurry/mortar. Fast strength gain and the consistency of the material is adjusted by the quantity of water added. Can be applied up to 20mm thick.	1.5-1.7 kg/m ² /mm	0429	○	36	Bag 25 kg	Varies
Repellent Render 1 component cementitious fibre reinforced water impermeable render. Wide use of applications in structural waterproofing systems.	1.6 kg/m ² /mm	0428	○	36	25 kg	Varies
Waterproofing Filler 1 component hydraulic cementitious fast curing waterproofing filler. Suitable for leveling up, void filling and coving details.	1.7 kg/m ² /mm 1.7 kg/lm (cove)	0426	●	36	Bag 25 kg	14.7
Sealing Cove Filler Rapid 1 component cementitious rapid setting waterproofing mortar. Use as a filler / coving mortar beneath waterproofing systems	1.7 kg/m ² /mm	0423	○		Bag 25 kg	Varies
Rapid Hardener 1 component cementitious rapid curing leak sealing mortar. Mixed with water, it sets in 30 seconds to seal against moisture or water ingress under pressure. Chloride free.	1.7 kg/ltr cavity Volume	1010	●	45 33	Bucket 5 kg 15 kg	2.5 ltr 7.5 ltr
ElastogROUT 1K 1 component cementitious flexible waterproofing slurry. Suitable for use internally & externally it cures to form a bonded, elastic & crack bridging impermeable waterproof layer. *Water pressure tight at 2 bar.	2.8 – 4.2* kg/m ² /mm	0445	●	30	Bag 20 kg	11.1
ElastogROUT 2K 2 component cementitious flexible waterproofing slurry. Suitable for use internally or externally, it cures to form a bonded, flexible and crack bridging impermeable waterproofing layer.	1.7 kg/m ² /mm	0452	●	12	Bucket 20 kg	Varies
Epoxy Universal 2 component, solvent based, crack bridging, thixotropic, epoxy resin with high chemical resistance for prepared metal, concrete, screeds. Can be brushed/sprayed. Ideal for sewage treatment/biogas plants.	Up to 0.4 kg/m ² /coat Black Red	5590 5591	△	60 30	Tin 5 kg 10 kg 30kg	12.5 25.0 75.0
Deep Primer W Water based primer used to strengthen and prime mineral substrates on gypsum or cement base, as a primer for levelling compounds and for treating dusting, sanding screed surfaces.	0.1-.02 ltr/m ²	2842	●	40 24	Drum 5 ltr 30 ltr	50.0 300.0

WATERPROOFING AND DAMP-PROOFING

Product	Coverage (per coat) kg/m ² or ltr/m ²	Prod.No	Stock	Unit per pallet	Pack size	Yield m ²
2 - Injection						
Epoxy Crack Fix Easy to use kit comprising of 0.5 kg fast cure resin, 10 reinforcing strips, gloves and 1 kg of aggregate. Epoxy resin supplied in a unique twin chamber bag requiring no mixing tools. Tolerate low temperature and substrate m/c up to 6%.		6089	●	128	Bag 1.5 kg	Varies
Injection Resin 100 2 component epoxy based very low viscosity injection resin. Suitable for pressure injection applications.	1.1 kg/ltr	0944	○		Tin 1 kg 5 kg	Varies
IG Acryl 3K 3 component, low viscosity acrylic injection gel. Swells in contact with water. Used in curtain wall injection and general waterproofing.	Varies	6873	△		Canister Set 22.95 kg	Varies
IR Epoxy 360 2 component, low viscosity epoxy injection resin. Cures to form a high strength, rigid resin. Ideal for bonding delaminating screeds, grouting cracks in concrete and general injection repair works.	Varies	6872	△	300 84	Can 1 kg 7 kg	Varies
IR PUR 2K 150 2 component, flexible, polyurethane injection resin. Cures to form an elastic, flexible resin. Suitable for use in damp surfaces / voids in general construction works.	Varies	6871	△	300 84	Can 1 kg 7.75 kg	Varies
IR PUR 250 1 component, flexible, polyurethane injection resin. Reacts with water to form a foam that seals against water penetration.	Varies	6870	△	495 84	Can 1 kg 5.3 kg	Varies
Injection Cream 1 component water based cream on a silane/siloane base. Suitable for treatment of rising damp in masonry.	Varies (see technical data sheet)	0709	△ △ △	64 22 1	Bucket 5 ltr 18 ltr 952 ltr	- - -
Kiesol C 1 component silane based solvent free cream. Used to prevent rising damp in masonry walls. 80% active content and can be used in walls with high levels of moisture (95%).	Varies (see technical data sheet)	0727	○	Box of 20 x Sausage	550ml Bucket 5 ltr 15 ltr	Varies
3 - Structural Waterproofing – External						
Kiesol 1 component silicic based solvent free waterproofing liquid. Multipurpose use within the range of Remmers Waterproofing Systems.	Varies with application 0.2 kg/m ² (diluted at 1:1 with water)	1810	●	6/box 84 50 24	Tin 1 kg 5 kg 10 kg 30 kg	10.0 50.0 100.0 300.0
Stopaq 1 component elastoplastic sealing compound. Adheres to practically all substrates to form a water & gas tight seal with good chemical resistance. Can be used under water.	Varies	260301	● ○	25/box	Cartridge 310 ml Drum 20 kg	-

WATERPROOFING AND DAMP-PROOFING

Product	Coverage (per coat) kg/m ² or ltr/m ²	Prod.No	Stock	Unit per pallet	Pack size	Yield m ²
3 - Structural Waterproofing – External						
Ilack ST 1 component bitumen based solvented coating. Suitable for use as a general construction waterproofing & protective coating.	0.2 ltr/m ²	0812	○	60 45 14	Bucket 5 ltr 10 ltr 25 ltr	150.0
Profi Tight 2K 2 component modified bitumen emulsion crack bridging coating. Suitable for exterior waterproofing and can be applied by hand or machine. Radon tight and meets DIN 18195.	2-2.75 kg/m ² /coat	0886	●	14	Drum 30 kg	15.0 One coat
Multi Tight 2K 2 component high performance, solvent free, crack bridging, waterproofing material. Combination of a polymer modified crack bridging thick coating and a mineral grout. Can be applied internally and externally. Tested in a system up to 2 bar negative water pressure.	1.5-4.5 kg/m ²	3014	●	44 4.8kg powder + 3.5kg polymer 12 3 x 4.8kg powder + 10.6kg polymer	Bucket 8.3kg Bucket 25 kg	Varies
DS System Protection High performance protection & drainage system for application over Remmers waterproofing systems.	Available in rolls 20 m x 2 m	0823	●	6	Rolls 40 m ²	40.0
DS Banding Preformed closure system for DS Protection that is fixed to the substrate. Use with banding clips.	1.0 m/m	0819	●	6	Long 2m	In 2.0
DS Banding Clips Clip system to affix DS Banding to walls as part of the Profi Tight waterproofing system. Sold in bags of 50.	4 pieces/m	0818	○		Bag of 50	12.5
Water Stop B200/B300 Neoprene rubber & reinforcing fabric jointing system. Suitable for sealing & waterproofing movement joints against positive pressure.	30 m long	4812 4813	○ ○		300 mm 200 mm	
Water Stop VF A TPE Elastic coated, polypropylene fabric jointing system that can be used to waterproof movement and expansion joints. Use in conjunction with Multi Tight 2K, Liquid Foil, Elasto Grout 1K/2K systems.	Varies	5071 VF120 5072 VF120 5075 VF500 5073 Exterior Corner VF 5074 Interior Corner VF 5077 Wall Gasket VF	△ △ △ △ △ △	Roll (120m/m wide) Roll (120 m/m wide) Roll (500 m/m wide) No. No. No.	10m 50m 10m Box (25 per box) Box (25 per box) Box (25 per box)	

WATERPROOFING AND DAMP-PROOFING

Product	Coverage (per coat) kg/m ² or ltr/m ²	Prod.No	Stock	Unit per pallet	Pack size	Yield m ²
3 - Structural Waterproofing – External						
Reinforcement Fabric 2.5/100 Rot proof alkali resistant fabric reinforcing mesh for incorporation into coatings or joints. (2.5 mm mesh grid).	100 cm wide	4176	○		Roll 1m x100m	100.0
Reinforcement Fabric 2.5/25 Rot proof alkali resistant fabric reinforcing mesh for incorporation into coatings or joints. (2.5 mm mesh grid).	25 cm wide	4177	○		Roll 25cm x 20m	5
Reinforcement Fabric 5/100 Rot proof alkali resistant fabric reinforcing mesh for incorporation into coatings or joints. Can be used to reinforce bituminous thick coatings. Actual mesh size 4.8 x 5.1mm.		4184 4183 3880	○		Roll 25cm x 20m 1m x 100m 1m x 50m	Varies
4 - Other						
Mould Protect Micro silver based emulsion paint to permanently banish mildew, mould and condensation problems. In pail tinting to most colours. Meets DIN EN 13 300 : Class 2. In can tinting to most colours.	0.15 l/m ² /coat White	2984	○	48 24	5 ltr 15 ltr	50.0 130.0
Liquid Foil 1 component elastic waterproofing coating for walls and floors in wet room areas (bathrooms, showers). (Jointing systems to be purchased separately).	1.5 kg/m ² /mm	2828	○	48 24	Bucket 7 kg 20 kg	varies

FLOORING

Product	Coverage (per coat) kg/m ² or ltr/m ²	Prod.No	Stock	Unit per pallet	Pack size	Yield m ²
1- Floor Seals and Primers						
Concrete & Screed Strengthener 1 component silicate solution for strengthening, hardening and dustproofing of cement based substrates.	0.2-1.0 kg/m ²	1290	○	54 24	Drum 10 kg 30 kg	50.0 150.0
Epoxy BS 2000 Transparent New 2 component clear water based epoxy primer, sealer and dustproof. For walls & floors. Suitable for bituminous substrates.	Approx 0.1-0.2 kg/m ²	6011	●	99 30	Tin 2.5 kg 10 kg	16.7 66.7
Epoxy BS 2000 New 2 component, environmentally, friendly, coloured, water-based matt finish epoxy resin coating.	Approx 0.1-0.2 kg/m ² per coat Pebble Grey (RAL 7032) Silver Grey (RAL 7001) Light Grey (RAL 7035) Basalt Grey (RAL 7012) Stone Grey (RAL 7030)	6001 6002 6005 6009 6006		200 60 45 12	Tin 1 kg 5 kg 10 kg 25 kg	5.0 25.0 50.0 125.0
Epoxy MT 100 2 component epoxy resin-based, moisture-tolerant primer for cementitious substrates where there is a degree of oil and moisture contamination. (Unique twin chamber bag).	0.35-0.5 kg/m ²	6362 0936	●	99 30 12	Bag 2.5kg Tin 10 kg 25 kg	7.2 28.6 71.5
Epoxy ST 100 2 component solvent free epoxy resin primer and binder for universal use. Can be accelerated with Accelerator PH. (Unique twin chamber bag).	Approx 0.3-0.5 kg/m ²	6361 1160	●	200 99 30 12	Multi-chamber Bag 1 kg 2.5 kg Tin 10 kg 25 kg	3.3 8.3 33.3 83.3
Epoxy ST 100 LV 2 component low viscosity, solvent free epoxy resin. Economical and can be highly filled on site.	Varies 0.3 kg/m ²	1151	○	12	30 kg	Varies
Epoxy Quick 100 2 component solvent free epoxy primer and binder with very fast cure time. (Unique twin chamber bag)	As a primer 0.3-0.5 kg/m ²	6097 0899	●	180 108 30	Multi-chamber Bag 1 kg 2.5 kg Tin 10 kg	3.3 8.3 33.3
Epoxy FAS 100 2 component solvent free epoxy with exceptional bond to wet, glazed and difficult surfaces. Recommended for PUR coatings due to non-bloom formulation. (Unique twin chamber bag)	As a primer 0.3-0.5 kg/m ²	6364 0916	●	99 30 12	Multi-chamber Bag 2.5 kg Tin 10 kg 25 kg	8.3 33.3 83.3
Epoxy CR 100 2 component, solvent free high chemical resistant epoxy resin system.	Approx 0.3-0.5 kg/m ² Clear	6171	○	99 30	Tin 2.5 kg 10 kg	8.3 33.3

FLOORING

Product	Coverage (per coat) kg/m ² or ltr/m ²	Prod.No	Stock	Unit per pallet	Pack size	Yield m ²
1- Floor Seals and Primers						
Epoxy UV 100 2 component solvent free epoxy primer and binder with reduced yellowing. For priming, screeds and as a seal coat. (Unique twin chamber bag).	Approx 0.1-0.2 kg/m ²	6363	●	99	Multi-chamber Bag 2.5 kg Tin 10 kg 25 kg	8.3
		6340		30		33.3
				12		83.3
Epoxy Primer PF New 2 component, pre-filled pigmented epoxy primer / leveller / base layer. Economical and can be further filled on site (up to 1:1).	Varies 0.4-1.4 kg/m ² Available in standard colours Neutral Light Grey – RAL 7035 Silver Grey – RAL 7001 Special colours available upon request – (min order >200 kg)	1226	○	12	30 kg	Varies
		1225				
		1224				
		1223				
					200 kg	

FLOORING

Product	Coverage (per coat) kg/m ² or ltr/m ²	Prod.No	Stock	Unit per pallet	Pack size	Yield m ²
2- Coatings						
Epoxy BS 2000 New 2 component, environmentally, friendly, coloured, water-based matt finish epoxy resin coating.	Approx 0.1-0.2 kg/m ² per coat Pebble Grey (RAL 7032) Silver Grey (RAL 7001) Light Grey (RAL 7035) Basalt Grey Stone Grey (RAL 7030)	6001 6002 6005 6009 6006		200 60 45 12	Tin 1 kg 5 kg 10 kg 25 kg	5.0 25.0 50.0 125.0
Epoxy BS 3000 SG New 2 component, environmentally-friendly, coloured, water-based, high solids (68%) epoxy resin coating. In pail tinting system for RAL/BS/NCS Colour Shades. Silk gloss finish – (only available in 10kg and 25 kg).	Approx 0.2 kg/m ² per coat Pebble Grey (RAL 7032) Silver Grey (RAL 7001) Light Grey (RAL 7035) Basalt Grey (RAL 7012) Special Colours > 100 kg Special Colours < 100 kg	6381 6382 6383 6389 6380 6399	● ● ● ● ●	200 60 30 12	Tin 1 kg 5 kg 10 kg 25 kg	5.0 25.0 50.0 125.0
Epoxy BS 3000 M New 2 component, environmentally-friendly, coloured, water-based, high solids epoxy resin coating. Matt finish. Min order 20kg.	Approx 0.2 kg/m ² per coat Pebble Grey (RAL 7032) Silver Grey (RAL 7001) Special Colours < 100 kg Min order 20 kg	6371 6372 6379	△ △ △	200 60 30 12	Tin 1 kg 5 kg 10 kg 25 kg	5.0 50.0 125.03
Epoxy PH Color 2 component, coloured, solvent free high build epoxy coating system. Stock always available in RAL 7001 *Only available in 25kg **Limited colours	Min 0.3 kg/m ² per coat Pebble Grey (RAL 7032) Silver Grey (RAL 7001) Light Grey (RAL 7035) Basalt Grey (RAL 7012)* Stone Grey (RAL 7030)* Window Grey (RAL 7040)* Special Colours **	6961 6962 6963 6964 6965 6966 6960	● ● ○ ○ ○ ○ △	30 12	Tin 10 kg 25 kg	33.3 83.3
Epoxyflex Coating PH 2 component, coloured, solvent free flexible high build epoxy coating system. *Special Colours only available in 12kg and 25kg pack sizes.	Min 0.3 kg/m ² per coat Pebble Grey (RAL 7032) Silver Grey (RAL 7001) Light Grey (RAL 7035) Basalt Grey (RAL 7012) Special Colours > 100 kg* Special Colours < 100 kg*	6251 6252 6253 6258 6250 6259	● ● ● ● △ △	200 45 12	Tin 1 kg* 12 kg 25 kg	3.3 40.0 83.3
Accelerator PH 1 component. By adding Accelerator PH, the drying time and curing rate of Epoxy PH is accelerated.	Add up to 2-4 % by weight	1295	●		Tin 0.5 kg	Varies
Epoxy CR Color 2 component, solvent free, coloured, high chemical resistant epoxy resin system.	Min 0.3 kg/m ² per coat As a coating Min 0.5 kg/m ² Pebble Grey (RAL 7032) Special Colours	6161 6179	● △	30 12	Tin 10 kg 25 kg	20.0 50.0
Epoxy WHG Color 2 component, highly chemically resistant crack bridging coating. For lining of external containment bunds or tanks. Test certificates and approvals available. German Technical Approval No. 5912-302	1.5 kg/m ² min Pebble Grey (RAL 7032) Special Colours (>100kg)	1428 1429	△	45 12	10 kg 25 kg	6.7 16.7
Epoxy SiC Color Top 2 component, solvent free, coloured, epoxy textured coating with silicon carbide aggregates. By RAL colour, to order.	0.5 kg/m ² Silver Grey (RAL 7001) Light Grey (RAL 7035) Pebble Grey (RAL 7032) Special Colours Min. Order 400 kg	1182 1183 1186 1187	△ △ △ △		10 kg 30 kg	20.0 60.0
Remmers Crete TF Thin film, fast-curing, 3- component, Polyurethane coating. For heavy duty floors.	0.15 kg/m ²	260085-91	○		3 kg	20.0

FLOORING

Product	Coverage (per coat) kg/m ² or ltr/m ²	Prod.No	Stock	Unit per pallet	Pack size	Yield m ²
3-Flow Systems						
<p>Epoxy BS 3000 SG New</p> <p>2 component, environmentally-friendly, coloured, water-based, high solids (68%) epoxy resin coating.</p> <p>In pail tinting system for RAL/BS/NCS Colour Shades.</p> <p>Silk gloss finish – (only available in 10kg and 25 kg).</p>	<p>Approx 0.2 kg/m² per coat</p> <p>Pebble Grey (RAL 7032) Silver Grey (RAL 7001) Light Grey (RAL 7035) Basalt Grey (RAL 7012) Special Colours > 100 kg Special Colours < 100 kg</p>	<p>6381 6382 6383 6389 6380 6399</p>	<p>● ● ● ● ● ●</p>	<p>200 60 30 12</p>	<p>Tin 1 kg 5 kg 10 kg 25 kg</p>	<p>5.0 25.0 50.0 125.0</p>
<p>Epoxy BS 4000</p> <p>2 component, environmentally-friendly, coloured, water-based, epoxy resin binder. Fill with SBL Filler (6747) @ 1:1.5 – 1:1 for a water vapour permeable flow system.</p> <p>Important Note: - Cannot be used as an unfilled coating!</p>	<p>0.9 – 2.65 kg/m²</p> <p>Pebble Grey (RAL 7032) Silver Grey (RAL 7001) Light Grey (RAL 7035) Basalt Grey (RAL 7012) Special Colours > 200 kg</p>	<p>6321 6322 6323 6324 6320</p>	<p>△</p>	<p>60 30</p>	<p>Tin 5 kg 10 kg</p>	<p>Varies</p>
<p>Remmers Crete SL</p> <p>Self-smoothing, fast-curing, 3- component polyurethane screed 2-4mm.</p>	<p>1.9 kg/m²/mm</p>	<p>260076 - 82</p>	<p>○</p>		<p>30kg</p>	<p>At 2mm 7.9</p>
<p>PUR Indu Color D40</p> <p>2 component, mid-hard solvent free, flexible waterproof membrane on PUR base. Can be accelerated to cure very quickly. Ideal for re-inforced deck waterproofing systems.</p>	<p>1-3 kg/m²</p>	<p>260178 - 80</p>	<p>○ RAL 7001 normally in stock</p>		<p>Tin 10 kg 25 kg</p>	<p>10.0 25.0</p>
<p>PUR Indu Color D60</p> <p>Harder version of PUR membrane for build-up systems. Ideal for balcony deck waterproofing.</p>	<p>1-3 kg/m²</p>	<p>260181 - 86</p>	<p>△</p>		<p>Tin 10 kg 25 kg</p>	<p>10.0 25.0</p>
<p>PUR Uni Color New</p> <p>2 component, flexible, solvent free, tough industrial flow coating. Can be filled on site and applied as a flow coating.</p> <p>Min. Order quantities apply.</p>	<p>Pebble Grey (RAL 7032) Silver Grey (RAL 7001) Light Grey (RAL 7035) Basalt Grey (RAL 7012) Special Colours (Min order 100kg – 500kg) >500kg</p>	<p>6802 6803 6804 6805 6800 6801</p>	<p>△</p>		<p>Tin 10 kg 25 kg</p>	<p>Varies</p>
<p>PUR Deco Color Bright</p> <p>Mid-hard comfort floor for domestic and retail installations, with good colour stability.**</p> <p>*samples only</p> <p>** For installation by suitably experienced and trained specialist installers only as part of a Remmers PUR Comfort/Poured Floor system.</p>	<p>3 kg/m²</p>	<p>260330</p>	<p>△</p>		<p>Tin 1 kg* 11 kg 25 kg</p>	<p>At 2mm - 3.7 8.4</p>

FLOORING

Product	Coverage (per coat) kg/m ² or ltr/m ²	Prod.No	Stock	Unit per pallet	Pack size	Yield m ²
4-Screeds and Binders						
Optiplan Base Economy grade multi-purpose levelling screed for inside use, 2-50mm thickness.	Approx 1.7 kg/m ² /mm	260276	●	40	Bag 25 kg	At 5 mm 2.9
Multiplan SiC 1 component, hydraulic, fast setting, highly abrasion resistant. Easy to work, for indoors and outdoors. Layer thickness up to 15 mm. Suitable for wet areas and for pumping – Contact Remmers for advice.	Approx 1.9 kg/m ² /mm	2804	○	40	Bag 25 kg	At 5 mm 2.6
Betofix R4 EM Highest strength mortar for repairing and screeding floors. Can be applied at a thickness of 15-80mm.	2 kg/m ² /mm	1086	○	30	Bag 25 kg	Varies
Multiplan 1 component levelling screed for use in wet/dry areas inside or out. Can be pumped.	Approx 1.9 kg/m ² /mm	2830	○	40	Bag 25 kg	At 5 mm 3.3
Remmers Crete HF Tough, economical, 3-component polyurethane screed. For heavy duty floors.	Approx 2.1 kg/m ² /mm Refer to colour chart	260052 - 61	○		30 kg	At 6mm 2.5 At 9mm 1.7
Remmers Crete RT Tough, resin-rich, 3 component polyurethane screed. For heavy duty floors.	Approx 2.1 kg/m ² /mm Refer to colour chart	260064 – 73	○		30 kg	At 6mm 2.5 At 9mm 1.7
Remmers Crete WR Detailing render and coving material in Remmers Crete range.	Approx 2.1 kg/m ² /mm	260097 - 100	○		15 kg	Varies
PUR Rubber Concrete 3 component non toxic screed. PUR binder with blended quartz and recycled rubber filler. Ideal for stables.	1.4 kg/m ² /mm	260187	△		27.5 kg	At 10mm 2.5
Remmers Playsafe Hand laid flooring system for children's play areas. Combination of SBR rubber granulate base and coloured Epoxy rubber wear layer bound in a 2 component polyurethane.	Coverage varies Black SBR rubber (2-6mm/m ²) Coloured EPDM (1-4mm/m ²) Binder	260269 260270 260293	△ △ △		Bag 25 kg Bag 25 kg Barrel 220 kg	
Consult Remmers technical department for further advice on layer thickness and colour						

FLOORING

Product	Coverage (per coat) kg/m ² or ltr/m ²	Prod.No	Stock	Unit per pallet	Pack size	Yield m ²
4-Screeds and Binders						
Epoxy ESC100 2 component solvent free epoxy binder. Use in a 1:15 – 1:25 ratio with quartz aggregate to produce economic and durable screeds.	Varies	6218	○		Multi-chamber Bag 2 kg Tin 10 kg 30 kg	Varies
PUR Grip 100 3 component polyurethane solvent free, fast curing coating for broadcasting to create non-slip surfaces on asphalt and concrete.	Typically 2-3 kg/m ²	260282	○		30 kg	15.0
PUR UV 100 2 component aliphatic polyurethane binder for external stone carpet systems.	Varies	260286	○		6.5 kg	Varies
PUR ST 100 2 component aromatic polyurethane stone carpet binder.	Varies	260289	○		7 kg	Varies
5-Fixings Layers and Seal Coats						
Epoxy UV 100 TX 2 component, thixotropic clear epoxy resin for fixing and grouting flake and aggregate systems.	0.3 kg – 0.4 kg/m ²	6300	●	90 45	Bucket 2.5 kg 10 kg	8.0 35.0
Epoxy ST 100 TX 2 component, thixotropic clear epoxy resin for fixing and grouting flake and aggregate systems or as a pore filling primer on ESC100 screeds.	0.3 kg – 0.5 kg/m ²	1157	○	30	Tin 10 kg 25 kg	50.0 125.0
Epoxy UV 100 2 component, solvent free, low, yellowing, clear epoxy resin sealer. (Unique two chamber bag).	0.3 kg - 0.4 kg/m ²	6363 6340	●	128 45 12	Bag 2.5kg Tin 10 kg 25 kg	8.3 33.3 83.3
Artico Color Matt pigment paste for PUR Top M/M Plus.	Mixing ratio 2.5 kg PUR Top M Plus and 1.5kg Artico Color Pebble Grey (RAL 7032) Silver Grey (RAL 7001) Special Colours on Request	6765 6766 6767	△ △ △		Tin 1.5 kg	1 tin per 2.5 kg of PUR Top
PUR Top M 1 component solvent free, clear matt PU seal.	0.1 kg/m ²	6740	●		Tin 2.5 kg	25.0
PUR Top M Plus 1 component solvent free, clear matt PU Seal coat with polymer additive (150 micron) for enhanced slip resistance.	0.1 kg/m ²	6735	●		Tin 2.5 kg	25.0
PUR Aqua Top M 2 component water based matt finish PU coating. Clear. Fully Matt.	0.12 kg/m ² /coat Matt	260194	●		5 kg	00.0
PUR Aqua Top 1K Single component water based clear PUR Acrylic seal coat for flake systems.	0.2 kg/m ² gloss	3690	●		Tin 2.5 ltr 10 ltr	12.5 50.0

FLOORING

Product	Coverage (per coat) kg/m ² or ltr/m ²	Prod.No	Stock	Unit per pallet	Pack size	Yield m ²
5-Fixings Layers and Seal Coats						
PUR Aqua Top 500 2K M 2 component, water based clear thin film seal coat for sealing most resin floor systems. Good resistance to UV, chemicals, low dirt retention.	0.13 – 0.15 kg/m ² Silk matt	3633	● ○	200 28	Tin 1 kg 10 kg	6.7 66.7
PUR Aqua Top 2K M+ 2 component water based clear PUR Acrylic thin film seal coat for sealing most resin floor systems.	0.13 kg/m ² Silk matt	3631	○	128 28	Tin 2.5 kg 10 kg	19.2 76.9
PUR Aqua Color Top 2K M 2 component water-based coloured PUR Acrylic thin film seal coat. In pail tinting system for RAL/BS/NCS colour shades (10 kg tins only).	0.10 – 0.13 kg/m ² silk matt Pebble Grey (RAL 7032) Silver Grey (RAL 7001) Light Grey (RAL 7035) Special Colours	3682 3683 3684 3685	●	128 28	Tin 2.5 kg 10 kg*	17.0 70.0
				*10 kg tin only available for tinting		
PUR Color Top 2KS 2 component, solvented coloured PUR seal coat. Excellent durability, colour and weather resistance. Ideal as a seal coat on broadcast deck waterproofing layers. Good curing characteristics for outside use. PUR Color Top 2KSR grade also available.	0.3 kg - 0.5 kg/m ² Many Colours Possible	260198	○		Tin 5 kg 10 kg	12.5 25.0
Pore Filler 1 component thixotropic acrylic seal for open texture mortar screeds such as stone carpet. White, curing clear.	0.5 – 1.0 kg/m ²	260149	○		Tin 10 kg	12.5
6-Anti-Static Systems						
Copper Tape For use within Remmers Anti-Static Coating System.	Special Grid Plan	4551	●		Roll 16.5 linear meters (approx 6mm wide)	
Epoxy Conductive Black, conductive 2 pack epoxy emulsion used as a conductive primer.	0.2 kg/m ²	6671	○	28	Tin 10 kg	40.0
Epoxy WHG Color AS 2 component pigmented conductive coating. Good chemical resistance and crack bridging capabilities. Test certificates available.	Approx 1.5 kg/m ² Pebble Grey (RAL 7032) Special Colours* Min. order 100 kg *(Subject to +20%/kg charge)	1431 1435	△	45 12	Tin 10 kg 25 kg	Varies
Epoxy BS 3000 AS NEW 2 component water based conductive coating for economic static control coating systems, even on humid substrates. For conductive range coatings.	0.25 – 0.3 kg/m ² Min. order 100 kg	6394	△ △	30 12	Tin 10 kg 25 kg	40.0
Epoxy ESD Color 3K Special self smoothing epoxy screed for creating ESD compliant surfaces. 3 component screed. For installation by suitably experienced and trained specialist installers only.	0.25 – 0.3 kg/m ² Limited colours available Min. order 100 kg	6668	△	10	Tin 30 kg	40.0

FLOORING

Product	Coverage (per coat) kg/m ² or ltr/m ²	Prod.No	Stock	Unit per pallet	Pack size	Yield m ²
7-Repair Products						
Repair Mortar EP 2 K 2 component, cement and solvent-free, mineral filled, epoxy resin mortar, fast repair of concrete floors, highways, ramps, steps for interior and exterior work.	Varies	0943	●	80	Tin 5 kg	1.8
Epoxy Quick Fix Very fast curing epoxy repair mortar of excellent workability for detailing works, coving, renders, repairs and levelling. This kit comprises the primer, mortar, gloves, mixing tool and disposal bag for a complete repair kit. The mortar cures to a trafficable finish in 1 hour at 20°C or 2 hours at 8°C.	Varies	6272	●	48	Bucket 10 kg	5.0
Haftfest 1 component, concentrated polymer dispersion. For use as a bonding emulsion or as additive for polymer modified mortars.	Varies	0220	○	45	Drum 10 kg	Varies
8-Flakes and Aggregates						
m ²						
Colorid Flakes Collection Blend of PVC flakes for broadcasting into resin floor systems.	See brochure and colour card to select the correct product code. (also see on-line colour selector @ www.remmers.co.uk) Full scatter 0.5-0.7 kg/m ² Light contrast 0.05 kg/m ²	6225 – 6241	△		10 kg	20.00
Selectmix SBL Fine flour quartz blend for use with primers/coatings as a filler.	Varies	6747	●	40	Bag 15 kg	
Selectmix FF Special Filler blend for clear resins when producing flake system flooring. Slightly thixotropic, the mixed material ensures that flakes do not sink into the base layer achieving great speed increase and cost reduction as flake use and loss is limited.	Blend 12 kg with 10 kg of your chosen binder. i.e Epoxy ST100	260019	○		12 kg	Varies
Selectmix 25 Excellent grading of quartz aggregate for screeds, well suited as a filler in the production of powerfloated epoxy screeds.	Granulation 0.1 - 2.2 mm	4047	●	40	Bag 25 kg	
Selectmix 0/10 Special grading of quartz aggregate. Can be used to produce economic epoxy mortars with high compressive strength.	Refer to Tech Data Sheet	6750	○	52	Bucket 10 kg	
Selectmix RMS Mixture of dried quartz with special aggregate grading curve. Use to produce smooth screeds that can be power trowelled.	Granulation 0.1 - 3 mm	6752	○	40	Bag 25 kg	

FLOORING

Product	Coverage (per coat) kg/m ² or ltr/m ²	Prod.No	Stock	Unit per pallet	Pack size	Yield m ²
8-Flakes and Aggregates						
<p>Ceramix 03</p> <p>Fine grade coloured quartz aggregate mixture for the blinding/dressing of filled base layers.</p> <p>Check the min order quantity.</p> <p>Extra freight charges will apply for small quantities.</p>	<p>Granulation 0.1-0.3 mm Nominal 3 kg/m² as blinding Nine standard colours</p> <p>Anthracite Red Blue Silver Grey Red Red Brown Beige Green</p>	<p>260110 260111 260010 260113 260112 260114 260115 260116</p>	<p>△ △ △ △ △ △ △ △</p>	40	Bag 25 kg	
<p>Ceramix 07</p> <p>Medium grade coloured quartz aggregate mixture for the blinding/dressing of filled base layers.</p> <p>Check the min order quantity.</p> <p>Extra freight charges will apply for small quantities.</p>	<p>Granulation 0.7 mm Nominal 3 kg/m² as blinding Nine standard colours</p> <p>Light Grey Silver Grey Red Brown Anthracite Red Blue Beige Green Special Colours</p>	<p>6650 6651 6652 260119 260120 260121 260122 260123 260011</p>	<p>△ △ △ △ △ △ △ △ △</p>	40	Bag 25 kg	
<p>Ceramix 12</p> <p>Coarse grade colour quartz aggregate mixture for the blinding/dressing of filled base layers.</p> <p>Check the min order quantity.</p> <p>Extra freight charges will apply for small quantities.</p>	<p>Granulation 0.7-1.2mm Nominal 3 kg/m² as blinding Nine standard colours</p> <p>Light Grey Silver Grey Black Blue Green White Yellow Special Colours</p>	<p>260117 260118 260125 260126 260127 260129 260130 260128</p>	<p>△ △ △ △ △ △ △ △</p>	40	Bag 25 kg	
<p>Ceramix 20/30</p> <p>Pebble sized coloured aggregates for stone carpet effect. Blend with your selected binder at 1:10 p.b.w.</p> <p>Check the min order quantity.</p> <p>Extra freight charges will apply for small quantities.</p>	<p>Many sizes and colours to order</p> <p>NB: External grade available with high resistance to UV – contact the sales department for information.</p>	<p>260107</p>	<p>△</p>	40	Bag 25 kg	
<p>EP Screed Aggregate</p> <p>Specially graded quartz blend including gliding agent. Blend with any clear resin binder at ratio 10:1 for an epoxy screed mortar with excellent workability and a tight closing surface. Colours available.</p>	<p>Natural Green Blue Dark Grey Red Special Colours</p>	<p>260025 260024 260022 260023 260026 260027</p>	<p>● ○ ○ ○ ● ○</p>	40	Bag 25 kg	

FLOORING

Product	Coverage (per coat) kg/m ² or ltr/m ²	Prod.No	Stock	Unit per pallet	Pack size	Yield m ²
8-Flakes and Aggregates						
<p>Floormix Aggregate</p> <p>Special grade of colour quartz aggregate for the production of epoxy mortar screeds. One primary colour with black and white flecks to achieve an attractive easy to apply decorative resin mortar.</p> <p>Blend with any of our clear epoxy resins as a binder.</p> <p>Install @ a minimum of 5-6mm.</p>	<p>Ruby Red Jade Green Platinum Grey Sapphire Blue Special Colours</p>	<p>260108 260132 260109 260106 260133</p>	○	40	Bag 25 kg	Varies
<p>Floormix DQ Aggregate</p> <p>Special blend of graded decorative colour quartz aggregate for the production of epoxy mortar screeds. Can be laid at 3-4mm and available in a wide range of colour blends. Blend with any of our epoxy resins as a binder.</p> <p>Install @ a minimum of 3-4mm</p>	<p>Ruby Red Jade Green Platinum Grey Sapphire Blue Aqua Blue</p> <p>Refer to our on-line Colour chart for full colour range at: www.remmers.co.uk</p>	<p>260138 260137 260139 260142 260140</p>	△		Bag 25 kg	Varies
<p>Floormix DQ S Aggregate</p> <p>Bespoke blend of graded decorative colour quartz aggregate for the production of epoxy mortar screeds. Can be laid at 3-4mm. Blend with any of our epoxy resins as a binder.</p> <p>Install @ a minimum of 3-4mm</p>	Special Colours	260143	△		Bag 25 kg	Varies
<p>Quartz 01/03</p> <p>Fine Quartz Sand</p>	Granulation 0.1-0.3 mm	4405	○ ● ●	40	Bag 8.4kg 17.5kg 25 kg	
<p>Quartz 03/06</p> <p>Medium Quartz Sand</p>	Granulation 0.3-0.6 mm Or 0.4 - 0.7 mm	260016	●	40	Bag 25 kg	
<p>Quartz 07/12</p> <p>Coarse Quartz Sand</p>	Granulation 0.7-1.2 mm	260008	●	40	Bag 25 kg	
<p>Quartz 290 SE</p> <p>Special grading for economic filling of clear binders to create scratch coats or levelling layers.</p>	Carefully graded	260041	●	40	Bag 25 kg	
<p>Quartz 20/30</p> <p>Natural quartz aggregate for blinding over Epoxy primers prior to installation of screeds.</p>	Granulation 2 – 3 mm	260017	●	40	Bag 25 kg	

FLOORING

Product	Coverage (per coat) kg/m ² or ltr/m ²	Prod.No	Stock	Unit per pallet	Pack size	Yield m ²
9-Ancillaries						
WHG TX Thixotropic agent for use with resin coatings for creating structured finishes. Non hygroscopic.	Add 1% - 2% By weight of resin	1221	●		Bag 1 kg	
Add Mix 01 Additive for RMS epoxy screed mixes.	Varies	6278	○	96 65	Foil Bag 2.5 kg Bucket 10 kg	
Thinner V 100 Combination of solvents for cleaning and thinning suited to bituminous products.	Varies	1365	○		Tin 1 ltr 10 ltr	
Thinner V 101 Combination of solvents for thinning or cleaning.	Varies	0978	●	40	Tin 1 ltr 5 ltr 10 ltr 30 ltr	
Thinner V 103 Combination of solvents and alcohols for thinning EP Universal. Very good for cleaning tools.	Varies	5699	○	84	Tin 5 ltr	
Add 250 Hard polymer beads for enhancing slip resistance of coatings.	250 micron. Use at 3-5% addition by weight	6271	● △		Tub 0.25 kg 20 kg	
PE Fleece 100gsm Non woven needle punch fleece for reinforcement of PUR coatings in waterproofing systems.	50 m x 25 cm	260271	△		Roll	
PUR-Top Accelerator Catalyst for accelerating cure of PUR-Top seal coats.	Varies	9971	●		Tin 0.1 kg	
Heucosin Special 1 component powder pigment used for tinting primers /scratch coats / screeds.	Varies Pebble Grey Silver Grey Light Grey Anthracite Special Colours	6531 6532 6533 6534 6535	○ △	40	Bag 25 kg	
Accelerator D40 Catalyst for increasing cure speed of PUR Indu Color D40/D60.	Varies	260197	○		Tin 0.1 kg 1 kg 5 kg	
Accelerator UV 1 component accelerator for use with Epoxy UV100 / UV100 TX.		260299	△		Foil Bag 0.2 kg	

FLOORING

Product	Coverage (per coat) kg/m ² or ltr/m ²	Prod.No	Stock	Unit per pallet	Pack size	Yield m ²
9-Ancillaries						
UN 700 PW PUR Adhesive 2 component solvent free trowel grade elastic flooring adhesive.	0.7 kg/m ²	260191	●		5 kg 25 kg	7.2 30.0
PUR EG 120 2 component solvent free trowel grade elastic polyurethane grout for rubber crumb underlays.	0.6 kg/m ²	260002	●		5 kg 25 kg	8.3 34.0
Rubber Crumb Underlay PU bound recycled rubber crumb underlay as a shockpad/acoustic layer. (Standard Thickness 5mm)		260268	○		10M X 10M x 5MM (10M ²)	10.0

A full range of car park decking systems is available.

Contact Remmers UK Technical Department for further information.

JOINT SEALANTS

Product	Coverage (per coat) kg/m ² or ltr/m ²	Prod.No	Stock	Unit per pallet	Pack size	Yield m ²
Silicone Primer P 1 component primer for silicone joint sealants. Quick drying and ideal for exterior use.	Varies	7270	○	800	250ml aluminium bottle	Varies
Multi-Sil 1 component silicone joint sealant. Used as a general purpose sealant for sealing expansion joints. Minimum order – 1 box	Approx. 100ml/Lnm for a 10 x 10 mm joint cross section Standard Colours see below Special Colours	7389	△ △	12/box 12/box	Cartridge 310ml Sausage* 600 ml	
Standard Colours 7380 Transparent 7386 Dark Brown* 7392 Medium Grey* 7397 Cream White 7381 White* 7387 Black* 7393 Transparent / Milky* 7378 Window Grey* 7382 Medium Brown* 7388 Manhattan* 7395 Oregon* 7379 Cement Grey 7385 Brown* 7390 Dark Grey* 7396 Beech 7389 Special Colours						
Multi-Sil NUW 1 component silicone joint sealant. High mechanical and chemical resistance. Wide application use such as water tanks, swimming pools and food industry. Minimum order – 1 box	Colours Transparent Light Grey Manhattan* (*also available in 600ml)	7525 7527 7528*	△ △ △	12/box 12/box	Cartridge 310ml Sausage 600 ml*	Varies Varies
MS 150 1 component modified silane (MS) joint sealant and elastic adhesive. Excellent adhesion to many substrates including brick, concrete and wood. Used as a general purpose sealant for sealing façade expansion joints and sealing window frames into buildings. Minimum order – 1 box	Approx. 100ml/Lnm for a 10 x 10 mm joint cross section Standard Colour is Concrete Grey	7505	○	12/box 50 boxes per pallet	Cartridge 290ml Sausage 600ml	Varies Varies
Primer PUR 1 component primer for use with PUR and MS joint sealants, Quick drying.	Approx. 10ml/running meter for both sides of typical joints	7530	△	800 200	Aluminium bottle 250ml 1000ml	Varies Varies
PU AW 1 component joint sealing compound on a polyurethane synthetic resin base. Wide range of use including sewage works, water tanks and joint in contact with the ground. Highly resistant to the diffusion of gas. Test report available. Minimum order – 1 box	Approx. 100ml/running meter for a 10mm x 10mm joint section	7630 (Black)	△	12/box 72 boxes per pallet	Foil Sausage 600ml	Varies
Underwater Primer 2 component primer for joint sealants in permanently wet areas	Varies	7450	△	240	Tin 0.2 kg	Varies

TOOLS

Product	Prod. No	Stock
Clamp Trowel Straight edged trowel. Flat blade one side, clamp edge on the other for holding toothed blades.	423201	●
Coving Trowel Special curved coving trowel with handle for installation of coving mortars. Plawecki type.	504701	●
Epoxy Roller Sleeve (no handle or frame) Non shedding nylon roller for coatings Purchase the roller frame or handle separately.	Blue Stripe 10 cm 5045 25 cm 5049 50 cm 5040	● ● ●
Epoxy Rubber Grouting Trowel For applying epoxy grout to tiles or to close the surface of mortar screeds.	4084	●
Funcosil FacadeTest Kit Test kit for measuring the absorption capacity of building facades and materials according to the Karsten method.	4954	○
Gloves Gloves for resin handling - pair Gloves for resin handling - bag of 12 pairs	496801 496883	● ●
Infra-Red Surface Thermometer Electronic surface IR thermometer – indispensable for working with resin paints and coating to ensure avoidance of dew point.	260302	●
Injection Nozzle Plastic tube to connect to Kiesol C foil package.	418001	●
Matchstik Colour Detector Unique colour detector for painted surfaces. Click on and it tells you the closest colour match.	4946	○
Mixing Paddles Helical stirring rod / for most coatings. Profi Tight stirring paddle. Funcosil Patent Disperser / for air free mixing of low viscosity coatings.> 5Ltr. unit) Funcosil Patent Disperser / small size.< 5Ltr. unit)	4447 4249 474701 474702	● ● ● ●
All White Microfibre Sleeve Non shredding, high quality rollers for PU Seal coats.	10 cm 260295 25 cm 260296 50 cm 260315	● ● ●
PU Roller Sleeves (no handle or frame) Short non shedding roller for PU seal coats	Red Stripe 10 cm 5050 Red Stripe 25 cm 5051 Red Stripe 50 cm 5052 Black/Yellow Stripe 60 cm 260267	● ● ● ●
Roller Frame/Cage (double arm) For roller heads up to 60 cm	Cage up to 50 cm 5039 Cage up to 60 cm 260266	● ●
Roller Handle (single sided) For roller heads up to 10 -25 cm wide	10 cm 4449 25 cm 4445	● ●

TOOLS

Product	Prod. No	Stock
Sealant Gun Gun for 310 ml cartridges Gun for 600 ml sausage Gun for 1ltr cartridges	470101 470301 470201	● ● ●
Slurry Brush Slurry Brush for application of waterproofing grouts.	4517	●
Spike Shoes (pair) Sharp spike – pair.	35 mm spikes 4010	●
Spiked Rollers (sleeve without frame) Use 21 mm spikes for coatings, 35 mm spike for levelling compounds.	Width/Spike Length 25 cm/21 mm 5055 25 cm/35 mm 5056 50 cm/21 mm 5038 50 cm/35 mm 5057	● ● ● ●
Squeegee Rubber wiper for applying primers or fixing layers. Tough material. Handle purchased separately.	45 cm 503501 60 cm 503502	● ●
Telescopic Handle For insertion into roller and frame handles of tools.	4391	●
Textured Rollers (sleeve without frame) For structuring coatings and sealants.	10 cm 5023 25 cm 5053 50 cm 5054	● ● ●
Thermo Hygrometer Handy electronic thermometer and hygrometer for coating works. Gives dew point reading. Invaluable and easy to use.	260302	●
Toothed Blade Holder Metal head for holding various rubber toothed blades for excellent distribution of coatings and flow coatings.	5028	●
Toothed Blades Tooth Blades for clamp trowel article number 4232. No 22 for coatings at 0.3 – 0.5 kg/m ² No 25 for flow coatings at 2-3 mm	5029 4572	● ●
Toothed Blades Rubber For use in article number 5028. The stated size gives the approx coverage in brackets for epoxy coatings 2 mm (0.2 kg/m ²) 3 mm (0.4 kg/m ²) 4 mm (0.6 kg/m ²) 7 mm (1.5 kg/m ²) 10 mm (2 kg/m ²) 14 mm (7 kg/m ²)	503002 503003 503004 503007 503010 503014	● ● ● ● ● ●

Remmers Consumption Guide

Remmers Sealants - Consumption Guide (for rectangular joints)

$$\text{No of Cartridges/Sausages Required for Joint} = \frac{\text{Joint Width (mm)} \times \text{Joint Depth (mm)} \times \text{Length (m)}}{\text{Volume of Cartridge or Sausage (ml)}}$$

Remmers Solvent-free Resin and Mortar Systems

$$\text{Kg/m}^2/\text{mm} = \text{thickness (mm)} \times \text{S.G}$$

Remmers Coatings

$$\text{L/m}^2 = \frac{\text{Dft}(\mu)}{\text{Vs \%} \times 10}$$

$$\text{Kg/m}^2 = \frac{\text{Dft}(\mu)}{\text{Vs (\%)} \times 10}$$

*Please Note: The above information is for guidance only and does not allow for surface profile, wastage etc.

Dew Point Table

		Relative Humidity %																		
		10	15	20	25	30	35	40	45	50	55	60	65	70	75	80	85	90	95	100
25	°C	-9	-4	1	3	6	8	11	12	14	15	17	18	19	20	21	22	23	24	25
24	°C	-9	-5	-0	3	5	7	10	11	13	14	16	17	18	19	20	21	22	23	24
23	°C	-10	-6	-1	2	4	7	9	10	12	13	15	16	17	18	19	20	21	22	23
22	°C	-11	-6	-2	1	4	6	8	9	11	13	14	15	16	17	18	19	20	21	22
21	°C	-12	-7	-3	-0	3	5	7	9	10	12	13	14	15	16	17	18	19	20	21
20	°C	-13	-8	-4	-1	2	4	6	8	9	11	12	13	14	15	16	17	18	19	20
19	°C	-13	-9	-4	-2	1	3	5	7	9	10	11	12	13	14	15	16	17	18	19
18	°C	-14	-10	-5	-3	0	2	4	6	7	9	10	11	12	13	14	15	16	17	18
17	°C	-15	-10	-6	-3	-1	1	3	5	7	8	9	10	12	13	14	14	15	16	17
16	°C	-16	-11	-7	-4	-2	0	2	4	6	7	8	9	11	12	13	13	14	15	16
15	°C	-16	-12	-8	-5	-2	-0	2	3	5	6	7	8	10	11	12	13	13	14	15
14	°C	-17	-13	-9	-6	-3	-1	1	2	4	5	6	8	9	10	11	12	12	13	14
13	°C	-18	-14	-9	-7	-4	-2	-0	1	3	4	5	7	8	9	10	11	11	12	13
12	°C	-19	-14	-10	-8	-5	-3	-1	0	2	3	4	6	7	8	9	10	10	11	12
11	°C	-19	-15	-11	-9	-6	-4	-2	-1	1	2	4	5	6	7	8	9	9	10	11
10	°C	-20	-16	-12	-9	-7	-5	-3	-1	0	1	3	4	5	6	7	8	8	9	10
9	°C	-21	-17	-13	-10	-8	-6	-4	-2	-1	0	2	3	4	5	6	7	7	8	9
8	°C	-22	-18	-14	-11	-9	-7	-5	-3	-2	-1	1	2	3	4	5	6	6	7	8
7	°C	-23	-18	-14	-12	-9	-8	-6	-4	-3	-1	-0	1	2	3	4	5	5	6	7
6	°C	-23	-19	-15	-13	-10	-8	-7	-5	-4	-2	-1	-0	1	2	3	4	4	5	6
5	°C	-24	-20	-16	-14	-11	-9	-8	-6	-5	-3	-2	-1	0	1	2	3	4	4	5
4	°C	-25	-21	-17	-14	-12	-10	-8	-7	-6	-4	-3	-2	-1	-0	1	2	3	3	4
3	°C	-26	-22	-18	-15	-13	-11	-9	-8	-6	-5	-4	-3	-2	-1	-0	1	2	2	3
2	°C	-26	-23	-19	-16	-14	-12	-10	-9	-7	-6	-5	-4	-3	-2	-1	-0	1	1	2
1	°C	-27	-23	-19	-17	-15	-13	-11	-10	-8	-7	-6	-5	-4	-3	-2	-1	-0	0	1
0	°C	-28	-24	-20	-18	-16	-14	-12	-11	-9	-8	-7	-6	-5	-4	-3	-2	-1	-1	0

SALES ORDER FORM



Company / Customer Name:			Date:	
Invoicing Address:		Delivery Address:		
Post Code:		Post Code:		
Latest Delivery Date:		Order Number:		
Contact Name:		Contact		
Acknowledgement Fax:		Number (s):		
Acknowledgement Email:				
Special Instructions:				
Article #	Pack Size	Qty	Description	Nett Price / Discount %

GENERAL INFORMATION

All orders are to be placed/confirmed direct to: Remmers (UK) Limited, The Fleming Centre, Fleming Way, Crawley, West Sussex RH10 9NN. Tel: 01293 594010 Fax: 01293 594037 Email: sales@remmers.co.uk

- All principal products are held in our warehouse at Crawley – current stock levels available on request. Please use the stocking guide.
- Material returns can only be made with prior authorization from Remmers (UK) Ltd who will issue a GRN number. **Bagged (powder) goods, materials manufactured to special requirements or special colours will not be accepted for return.** We reserve the right to charge handling and restocking charges on all material returns at 25% of nett material value plus return transport. **Non-stock items are non-returnable.**
- Carriage:
Please see table below. For NEXT DAY delivery service, we reserve the right to charge additional premium. For all good purchased amounting to nett material sales value below £1,500, carriage is charged at the rates indicated against weight in the table below.
For all deliveries, please ensure that the postcode is added to the address, and a contact telephone number.
- All prices are exclusive of VAT.
- All goods are sold subject to availability at time of order, either ex stock or up to two weeks' lead time.
- All goods supplied remain Remmers' property until full payment is received.
- All business undertaken by the Company is transacted upon the Terms of the Company's Standard Trading Conditions which are printed on pages 40/41.
- Stocking code legend

●	- Normal stock item
○	- Limited stock kept
△	- To order only
- We cannot provide smaller units at the rate shown for larger units under any circumstances
- All yield and coverage guide figures are based upon sound, non-porous substrates using the maximum coverage for the stated thickness. No guarantee is given as to their accuracy.
- No allowance has been made for wastage and variations in surface profile or porosity. Site conditions may affect consumption.
- E & EO16.

CARRIAGE CHARGES

Zone	Price per Kg		Or Charge per Pallet	Min charge	Free carriage* on orders over (2-3 days)	Tail lift	Extra charge for timed/am/special	Notes
	Weight	£/Kg						
1	<100kg	£0.50	£50.00	£16.00	£1,500.00	£18.00	POA	Normally 24-48 hours
	<200kg	£0.40						
2	<100 kg	£0.65	£75.00	£25.00	£2,000.00	£20.00	POA	Normally 24-48 hours
	<200kg	£0.55						
3	<100kg	£0.80	£175.00	£50.00	£2,500.00	£45.00	POA	Normally 24-48 hours
	<200kg	£0.70						

Legend:
■ = Zone 1
■ = Zone 2
■ = Zone 3
■ = Zone 4

Zone 1	England & Wales
Zone 2	Scotland
Zone 3	NI and Eire
Zone 4	Other Islands (POA)

*Free carriage applies to all individual orders above the qualifying figure but will be subject to the excess for any special services.

Euro exchange rate : £1 = 1.25 Euros

All other terms as per Standard Terms & Conditions of sale

STANDARD TERMS AND CONDITIONS OF SALES FOR GOODS SOLD BY REMMERS (UK) LIMITED

1. FORMATION

1.1 In these Conditions the following expressions have the following meanings:

- 1.1.1 "we" or "us" means Remmers (UK) Ltd;
1.1.2 "you" or "yourselves" means the buyer who places an order for the Goods;
1.1.3 "Conditions" means these terms and conditions of sale including those described as commercial terms at the front of this document;
1.1.4 "Confidential Information" means any reports or information disclosed to you by us in contemplation of, pursuant to or in connection with this Contract (whether orally or in writing), whether or not such information is expressly stated to be confidential or marked as such;
1.1.5 "Contract" means the contract between us and you for the sale of Goods on these Conditions;
1.1.6 "Force Majeure" means any cause or Circumstance preventing either party from performing any or all of its obligations to the other (including without limitation any strike, lockout or other industrial action). For the avoidance of doubt any fault or delay in deliveries from our sub-suppliers shall be a Force Majeure event;
1.1.7 "Goods" means the products which you agree to buy from us as identified by your order (including any part or parts of them);
1.1.8 "Insurance" means the combined product and public liability insurance policy taken out and maintained by us;
1.1.9 "Intellectual Property" means all patents, copyrights, registered or unregistered trademarks, design rights, utility models, business names, domain names, Know-How and all other intellectual property rights of a similar nature (whether registered or not) subsisting anywhere in the world in or associated with the Goods;
1.1.10 "Working Days" means any day between Monday to Friday inclusive but excluding bank and public holidays.
- 1.2 Unless varied in accordance with Condition 3, the Contract, together with all schedules which form part of it, will be on the following Conditions to the exclusion of:
- 1.2.1 any other terms or conditions which you purport to apply any purchase order, confirmation of order or acceptance; and/or
1.2.2 any other written, oral or electronically transmitted communication; and such other terms and conditions shall not be deemed to form part of the contract.
- 1.3 In so far as this Contract concerns the general relationship between you and us, it shall come into force upon our acceptance of your credit application.
- 1.4 In relation to each individual supply of Goods, this contract shall come into force as provided for in Condition 2.

2. QUOTATIONS

- 2.1 Quotations and any accompanying technical or other information supplied by us are illustrative only and are not offers from us capable of immediate binding acceptance. A Contract shall come into existence only when we accept your order.
- 2.2 You shall have no rights to or in any documents or materials forming or accompanying a quotation and if we do not accept an order based on a quotation, you shall return all documents and materials forming or accompanying the quotation to us immediately at our request.

3. VARIATIONS

- 3.1 No addition or variation to any quotation given or the Contract is binding on us unless agreed in writing and signed by one of our Directors.
- 3.2 None of our staff, other than a Director, is authorized to make any representations concerning the properties or qualities of the Goods or to make any addition or variation to the Contract. You agree that in entering into this Contract you do not rely on any representations other than those contained in this Contract or expressly agreed by us in accordance with Condition 3.1.

4. DELIVERY

- 4.1 The Goods are delivered when either: -
4.1.1 you collect them from the Delivery Point following our notification that they are ready for collection; or
4.1.2 if you have requested an alternative delivery point and we have agreed, when we have delivered the Goods to that place.
- If you do request changes to the Delivery point, you shall be liable for any changes made by us or any additional costs or expenses incurred by us as a result of such a change.
- 4.2 We may at our discretion deliver the Goods by instalments.
- 4.3 The Delivery Date in the Commercial Terms and any other time or date which we give for delivery of the Goods or any instalment is an estimate only. You will not be entitled to terminate the Contract as a whole if we fail to meet any given times or dates for delivery unless such a delay exceeds 40 Working Days. Under this Contract, time is not of the essence. Where no delivery Date is given, delivery will be within a reasonable time.
- 4.4 Where delivery is made by instalments, each instalment is to be deemed a separate contract and any delay, default or non delivery of any one instalment shall not entitle you to cancel the remainder of the Contract.
- 4.5 If:
4.5.1 you fail or refuse to accept delivery; or
4.5.2 you do not give delivery instructions when the goods are ready for dispatch; or
4.5.3 delivery is delayed at your request then you will be

responsible for paying or reimbursing us any additional costs or charges which we incur as a result. Furthermore, we may at our option, withhold delivery of any further Goods or treat the Contract as repudiated by you.

- 4.6 You must notify us in writing if a delivery is not received within ten (10) Working Days from the date we informed you that it had been dispatched.
- 4.7 Unless we agree otherwise, you shall provide adequate labour and other facilities at the point of delivery to enable the Goods to be safely and properly unloaded. You shall indemnify us against any claims arising from such unloading except to the extent that any such claims relate to personal injury, death or damage to property which is caused by the negligence of our employees or agents.
- 4.8 In the event that we deliver to you an incorrect quantity of the Goods you shall not be able to object to or reject the Goods or any of them on that ground alone.
- 4.8.1 without prejudice to Condition 4.2, you shall not fail or refuse to accept delivery of any Goods on the grounds that the quantity is below the quantity ordered. So long as you notify us and the carrier of any shortage within three (3) Working Days after the Goods had been delivered or were collected by you and provided we have agreed the amount of the shortage, we shall deliver, within a reasonable time, the balance of the goods required to bring the total to the quantity ordered;
4.8.2 if we deliver in excess of 105% of the quantity agreed in the Contract you shall:
4.8.2.1 notify us immediately; and
4.8.2.2 request us to collect (at our expense) the excess quantity of the Goods; or
4.8.2.3 agree to pay us for the excess Goods pro rata at the Price and be invoiced accordingly for this.
4.8.3 if we shall deliver quantities between 100-105% of the Goods agreed in the Contract, there shall be no consequences for either party.
- 4.9 Subject to the other provisions of these Conditions, we shall not be liable for any direct, indirect or consequential loss (all of which include, without limitation, loss of profits, loss of business, depletion of goodwill and like loss), costs, damages, charges or expenses caused directly or indirectly by any delay in the Delivery Date or any other time given for delivery of the Goods (even if caused by our negligence).
- 4.10 If we are prevented, hindered or delayed from delivering the Goods because of a Force Majeure event, then we may give notice to you at any time in writing either: -
4.10.1 cancelling our outstanding obligations to deliver Goods under the Contract, or
4.10.2 extending the time for delivery of the Goods outstanding under the Contract by a period not exceeding three months.
- 4.11 If we give notice to you under Condition 4.10:
4.11.1 we shall not be liable to you in damages for any loss whether direct, indirect or consequential of whatever nature which you may incur as a result; and
4.11.2 the time for delivery shall be extended accordingly and we shall not be in breach of Contract due to the late delivery.
- 4.12 The above provisions of this Condition 4 do not affect our right to recover the price of any Goods that have already been invoiced to you or in respect of which risk has passed to you.

5. PAYMENT AND PRICE

- 5.1 The Price of the Goods shall be that stated or referenced in the Commercial Terms.
- 5.2 Prices are stated on the basis of current costs, exclusive of: VAT; and any cost of freight and insurance for deliveries outside the UK.
- 5.3 Prices given in a quotation may be increased by:
5.3.1 such amount as is reasonably necessary to reflect any increase in the cost of manufacturing the Goods; and/or
5.3.2 fluctuations in tax, duty, exchange rates and the like, between the date of quotation and the date of dispatch and we shall give you notice of any such increase.
- 5.4 Goods (and each instalment) will be invoiced on delivery or when we have notified you that they are ready for collection as appropriate.
- 5.5 Invoices are calculated by reference to the weight or volumes of the Goods at the time of packaging.
- 5.6 We shall require payment by you on or before the last day of the next calendar month from the date of invoice for the net sales of all Goods and all related expenses.
- 5.7 We may ask you to pay money in advance or on account and if so you must pay such amounts immediately with any balance being payable in accordance with Condition 5.6 above.
- 5.8 If you fail to make any payment when it is due or if any event described in Condition 9.5 occurs then the Price of all Goods and any other goods supplied by us to you shall immediately become due and payable and, without affecting any other remedy we may have, we may:-
5.8.1 treat this Contract and every other contract which has not yet been fulfilled between us and you as cancelled;
5.8.2 suspend any further deliveries to you or collection by you;
5.8.3 appropriate any payment made by you as we may think fit;
5.8.4 charge you interest (both before and after any judgement) on all sums due and outstanding up to and including the combined total of the: Official Dealing Rate of the Bank of England as applicable from time to time; and the rate provided by the Late Payment of Commercial Debts (Interest) Act 1998 as applicable from time to

time; and

- 5.8.5 be entitled to a general lien on the Goods and all your goods in our possession for the unpaid price of the Goods or any other goods sold to you.
- 5.9 All payments shall be made in Pounds Sterling unless we require or agree to payment in Euros or any other currency.
- 5.10 All payments must be made in full and you are not entitled to withhold payment of any amount which is due or to set off against any such amount any cross-claim (whether liquidated or unliquidated) for any sum or sums for which we do not admit liability.
- 5.11 Notwithstanding any other payment provisions, we reserve the right, in the event that you are a sole trader or partnership at the time of signing this Contract and subsequently decide to convert your status to that of a limited liability company, to issue forthwith an invoice for all outstanding amounts which you owe to us, for which we shall require payment within five (5) Working Days.

6. PACKAGING

- 6.1 The Goods will be delivered in the product containers which we hold in stock at the time your order is processed.
- 6.2 The Price of the Goods, unless otherwise stated, includes the costs of packaging materials.
- 6.3 Where it has been agreed that the packaging materials will be returned, you will be credited with the full cost of the packaging materials provided that you return the packaging at your cost to the delivery point in a reasonably satisfactory condition and within a reasonable time.

7. STORAGE

- 7.1 We may be able to store your Goods at a charge provided you give us at least five (5) Working Days' notice.
- 7.2 In the event that you have been given notice in accordance with this Contract that the Goods are ready for collection and you do not collect them within five (5) Working Days, unless a waiver of this clause has been agreed in writing by one of our directors, you shall be charged storage costs at the rate of £1 per day per tonne or per pallet of the Goods as applicable. Such charges shall continue to accrue until you collect the Goods and you shall be invoiced for such storage charges accordingly.
- 7.3 If we have stored your Goods for three (3) calendar months or more then we can give you one (1) calendar months written notice at any time requiring you to remove the Goods from storage.
- 7.4 If you do not remove the Goods when requested to do so, we may then dispose of them in any way we see fit. We will charge you with all costs of such disposal including costs of waste disposal and environmental charges, or if we are able to sell the Goods then we will set off the proceeds of sale against the costs of arranging the sale and any outstanding storage costs.
- 7.5 The provisions of this Condition 7 apply whether or not title in the Goods has passed to you.

8. RISK

- 8.1 Risk and responsibility for the Goods shall pass to you:-
8.1.1 on delivery by us to the Delivery Point; or
8.1.2 whichever is the earlier of:-
8.1.2.1 the collection of the Goods by you; or
8.1.2.2 the expiry of five (5) Working Days from the date of our notice to you that the Goods are ready for collection (and any Goods uncollected within this period shall incur storage charges in accordance with Condition 7).
- 8.2 You must examine the Goods on receipt and if you believe there is loss or damage to the Goods during transit which may be our responsibility, you must notify us in writing within three (3) Working Days of receipt of our delivery note. If we do not receive such written notice within the required time scale then we will not be liable to you for any loss or damage to the Goods arising during transit. If Goods have been damaged during transit then all packaging materials must be retained for examination by us, the carrier or their agents.

9. OWNERSHIP

- 9.1 Ownership of the Goods shall not pass to you until we have received payment in full and such funds are cleared for the Goods; and any other goods which have been delivered to you but for which payment is due and has not been received.
- 9.2 Until ownership has passed to the Buyer or you sell or use the Goods pursuant to Condition 9.3, you must:
9.2.1 hold the Goods on a fiduciary basis as our bailee;
9.2.2 store the Goods (at no cost to us) separately from all our other Goods or goods of a third party in such a way as they are identifiable as our property;
9.2.3 not destroy, deface or obscure any identifying mark, logo or packaging on or relating to the Goods;
9.2.4 maintain the Goods in a satisfactory condition and keep them insured, on your Insurance, for the Price against all risks (and provide us with a copy of such Insurance at our request); and
9.2.5 hold the proceeds of any insurance referred to in Condition 9.2.4 on trust for us and do not mix them with any other money or pay the money into an overdrawn bank account.
- 9.3 You may resell or use the Goods before ownership has passed to you on the following conditions:
9.3.1 any sale or use is in the ordinary course of your business;
9.3.2 any sale shall be to an unconnected third party at not less than the value of the Goods when sold to you;
9.3.3 any such sale shall be deemed as a sale of our property on your behalf and you shall deal as principal when making such a sale; and
9.3.4 you hold the proceeds of any resale on trust for us in a separate account in our joint names and do not mix

STANDARD TERMS AND CONDITIONS OF SALES FOR GOODS SOLD BY REMMERS (UK) LIMITED

- them with any other money or pay the proceeds into an overdrawn bank account.
- 9.4 We can revoke your right to sell and use the Goods at any time by written notice to you if you have failed to pay any sums due to us (whether relating to the Goods or other goods) within ten (10) Working Days of the due date or if we have genuine doubts as to your solvency.
- 9.5 Your power of sale and use above shall automatically cease if;
- 9.5.1 you have a petition presented for your winding up; or
- 9.5.2 (if you are an individual) you die or become incapacitated; or
- 9.5.3 you pass a resolution for voluntary winding up otherwise than for the purpose of a bona fide amalgamation or reconstruction; or
- 9.5.4 you compound with your creditors or have a receiver appointed over all or any part of your assets; or
- 9.5.5 a petition for an administration order is presented or is intended to be presented in respect of you; or
- 9.5.6 you become bankrupt or insolvent; or
- 9.5.7 you enter into any arrangements with creditors; or
- 9.5.8 you take or suffer any similar action in consequence of debts or carry out or undergo any analogous act or proceedings under foreign law.
- 9.6 If your power of sale and use ends under conditions 9.4 or 9.5 above, you will deliver up the Goods; or have them delivered up to us; and/or allow us to repossess the Goods and for the purposes of such repossession you grant to us (our agents and employees) an irrevocable licence to enter on any of your premises where the Goods are stored or where we may reasonably believe they may be stored.
- 9.7 You will not pledge the Goods and will keep them free from, and indemnify us against, any charge, lien or other encumbrance on them. If you do pledge or in any way charge any of the Goods, all monies owing to us by you shall (without prejudice to any other right or remedy we may have) immediately become due and payable.
- ## 10. RETURNED GOODS
- 10.1 If you discover before using them that Goods which we have delivered to you did not comply with the provisions of Condition 11.1 at the time of delivery then provided that;
- 10.1.1 written notice has been given to us of such defect within five (5) Working Days of the date when you first could have reasonably ascertained that such defect existed; and
- 10.1.2 you have not in any way dealt with the Goods so as to put them in a worse condition than when they were delivered to you we will replace or refund the Price of any Goods and reimburse you for all reasonable costs incurred by you in returning the Goods to us.
- 10.2 The remedy provided in Condition 10.1 shall, provided it is performed by us within a reasonable time, be your only remedy for defects in Goods which have not been used by you and for the avoidance of doubt we shall not be liable for storage costs; warehousing; processing; manufacturing; labour; or any other indirect or consequential loss.
- ## 11. THE GOODS WARRANTY
- 11.1 We warrant that the Goods will, at the time of delivery, display the technical properties for the approved uses set out in the relevant REMMERS (UK) LTD technical data sheets and health and safety sheets.
- 11.2 Any warranty given by us regarding the suitability of the Goods for any other use, other than an approved use, shall only be valid and binding if in writing and signed by one of our directors.
- 11.3 If you intend to buy or sell Goods for a non-approved use then you do so wholly at your own risk and must satisfy yourself as to the suitability of the Goods for that use.
- 11.4 If we supply you with Goods manufactured to your own specification then we shall have no liability whatsoever to you for their fitness for any anticipated purpose or use.
- 11.5 We shall not be liable to you for any loss you may incur as a result of your failure to comply with any of our technical, storage; safety; or any other applicable instructions and/or guidelines for the Goods.
- 11.6 If you sell the Goods, you shall grant no warranty greater in extent than this warranty.
- ## 12. LIABILITY
- 12.1 Save as expressly provided elsewhere in these Conditions (which other provisions shall take precedence) the following provisions of this Condition 12 set out our entire financial liability (including any liability for the acts or omissions of our employees, agents and sub-contractors) to you in respect of;
- 12.1.1 any breaches of these Conditions;
- 12.1.2 any representation, statement or tortious act or omission including negligence arising under or in connection with the Contract.
- 12.2 All warranties, conditions or other terms (whether express or implied) as to the fitness for purpose; use; satisfactory quality; description; compliance with sample; or condition, of the Goods, whether implied by statute, common law or otherwise (save for the conditions implied by section 12 of the Sale of Goods Act 1974 (as amended) are, to the fullest extent permitted by law, excluded from the Contract.
- 12.3 You must inform us as soon as possible and in any event within five (5) Working Days of you becoming aware that the Goods may have:
- 12.3.1 caused injury or death to any person; or
- 12.3.2 caused damage to property and where appropriate allow us to inspect and at our option repair any alleged damage.
- 12.4 Nothing in these Conditions excludes, limits or restricts our liability for fraudulent misrepresentation, death or personal injury caused by our negligence.
- 12.5 If we incur any liability to you as a result of any defect in the Goods once used by you as intended by these Conditions which causes personal injury (so far as not caused by our negligence) or damage to property where our liability falls within the scope of our insurance, our liability is limited to sums recoverable under it (or which could be recovered but for any negligent act or omission by us which invalidates it) up to its maximum indemnity limit.
- 12.6 Subject to Conditions 12.2, 12.4, and 12.5:
- 12.6.1 our total liability in contract, tort (including negligence or breach of statutory duty), misrepresentation, restitution or otherwise, whether such liability arises as a result of a breach or series of breaches, of a material term of the Contract or otherwise arising in connection with the performance or contemplated performance of the Contract shall be limited to the Price.
- 12.6.2 We shall not be liable to you for any loss of profits; depletion of goodwill; use; or any indirect or consequential loss or damage, whatsoever and howsoever caused which arises out of or in connection with the Contract.
- ## 13. OTHER PROVISIONS RELATING TO LIABILITY
- 13.1 If it may appear to any court, arbitrator or tribunal that any term of these Conditions which imposes any restrictions or limitations of our liability to the price, multiple of the Price or any specified sum and to which the Unfair Contract Terms Act 1977 applies, and such provision does not satisfy the requirements of reasonableness, such restriction or limitation shall not be disregarded or treated as void but shall be construed as if there were substituted in that clause such greater minimum specified sum or multiple of the Price as would be in the opinion of the court, arbitrator or tribunal be reasonable and shall be given effect accordingly.
- 13.2 Except as expressly provided in these Conditions (and except where the Goods are sold to a Consumer within the meaning of the Unfair Contract Terms Act 1977) all warranties, conditions or other terms implied by statute or common law are excluded to the fullest extent permitted by law (subject always to Condition 13.1).
- 13.3 Where the Goods are sold under a consumer transaction as defined by the Consumer Transactions (Restrictions on Statements) Order 1976 (as amended), the statutory rights of the Consumer are not affected by these Conditions.
- ## 14. INDEMNITY TO REMMERS (UK) LTD
- You shall indemnify us against all actions, claims or demands for losses suffered or incurred by us including (without limitation) claims by third parties for fraud, in tort or otherwise arising directly or indirectly in connection with the use, functioning or state of the Goods except to the extent that the same are caused by our negligence or default. You shall indemnify us against all actions, claims or demands for losses suffered or incurred by us including (without limitation) claims by third parties for fraud, in tort or otherwise arising directly or indirectly in connection with the use, functioning or state of the Goods except to the extent that the same are caused by our negligence or default.
- ## 15. INTELLECTUAL PROPERTY RIGHTS
- 15.1 We retain all Intellectual Property rights in the Goods (including, without limitation, in the packaging, instructions manuals and other documentation supplied) for the duration of this Agreement and after its termination for whatever reason.
- 15.2 You acknowledge that:
- 15.2.1 the Intellectual Property rights are our property;
- 15.2.2 nothing in these Conditions shall be construed as conferring any licence or granting any rights in favour of you (or anyone else) in relation to our Intellectual property rights;
- 15.2.3 we assert our full rights to control the use of our trade marks within the European Union and you shall assist us, as required. In preventing (so far as may be permitted by law) parallel importers from diluting our rights;
- 15.2.4 any reputation in any trade marks affixed or applied to the Goods shall accrue to our sole benefit.
- 15.3 You agree:
- 15.3.1 not to remove any trade marks, copyright notices or other forms of identification from the Goods (save for any removal which is a necessary result of a manufacturing process), or apply any other trade mark to the Goods;
- 15.3.2 to promptly and fully notify us of any actual, threatened or suspected infringement of any Intellectual Property rights which comes to your attention; and
- 15.3.3 not to make any adaptations or additions to or variations of any of our intellectual Property.
- 15.4 In the event that you make any discoveries, creations, inventions or improvements in relation to our Intellectual Property, you must, when instructed, transfer all such rights to us and effect all assignments as we may request.
- 15.5 We will not be liable to you for any costs, claims, damages, expenses or losses incurred by you as a result of any claim that the Goods or the use of any Goods infringes any third party Intellectual Property rights, in particular (but not limited to) where such costs, claims, damages, expenses or losses arise from any unauthorized modification, alteration or adaptation of the Goods by or for you.
- ## 16. CONFIDENTIALITY
- 16.1 Each of the parties to this Agreement undertakes to the other to keep confidential all Confidential Information concerning the business and affairs of the other which it has obtained or received as a result of discussions leading up to the entering into of this Agreement or which it has obtained during the course of this Agreement, except any information which is:
- 16.1.1 subject to an obligation to disclose by law or to any regulatory authority entitled to require disclosure by notice or otherwise;
- 16.1.2 already in its possession other than as a result of a breach in this Condition 16; or
- 16.1.3 in the public domain other than as a result of a breach of this Condition 16.
- 16.2 Each party undertakes to the other to take all such steps as shall from time to time be necessary to ensure compliance with the provisions of this Condition 16 by its employees, agents and subcontractors.
- ## 17. CREDIT CHECKS
- 17.1 We reserve the right to refuse to accept any order or perform any Contract if your arrangements for payment or credit appear to be or become unsatisfactory.
- 17.2 We reserve the right, in the event that you are not a limited liability company, to make searches of your details, background and credit history with credit reference and fraud prevention agencies prior to carrying out any obligations in these Conditions. Such credit reference agencies may, at their absolute discretion, keep a record of the search and share that information with other businesses.
- ## 18. GENERAL
- 18.1 We may at our absolute discretion accept the cancellation of any order provided we are notified no more than five (5) Working Days after the order has been accepted and we are indemnified by you in respect of all costs and expenses incurred prior to the cancellation being accepted, but in no circumstances are we obligated to accept any cancellations.
- 18.2 Any notice or communication to be given under this Contract must be in writing, delivered or sent by prepaid first class letter post, and:
- 18.2.1 if delivered or sent to you, will be addressed to your last known trading address; or
- 18.2.2 if delivered or sent to us, will be addressed to our Director at Unit B1, The Fleming Centre, Fleming Way, Crawley, West Sussex RH10 9NN. Any such notice shall be deemed served: if delivered by hand, at the time it was delivered; or if posted: 48 hours after posting.
- 18.3 We may assign, transfer, charge, sub-contract or deal in any other manner with the Contract, or any part of it to any person, firm or company. You may assign the Contract, or any part of it, only if you first obtain our written consent.
- 18.4 No waiver of any condition of this Contract shall be effective except where it is in writing and signed by the waiving party. No waiver of any particular breach of the Contract by us shall be held to be a waiver of any other or subsequent breach by you. No omission or delay by us in exercising a right under this Contract shall constitute or operate as a waiver by us of any right to exercise that right in the future or of any other rights under this Contract.
- 18.5 If any of the terms of this contract are found by any court or administrative body of competent authority to be illegal, void, voidable, invalid, unreasonable or unenforceable by any reason of law they shall be illegal, void, voidable, invalid, unreasonable or unenforceable to that extent only and all other terms of the Contract shall remain legal, valid, reasonable and fully enforceable.
- 18.6 We reserve the right to vary these Conditions as necessary on giving you reasonable notice in writing of such variation.
- 18.7 All Contracts shall be deemed to be made in England and shall be construed in accordance with and be governed by English law and shall be subject to the exclusive jurisdiction of the English courts.
- 18.8 A person who is not party to this Contract shall have no right under the Contracts (Rights of Third Parties) Act 1999 to enforce any term of this Contract. This clause does not affect any right or remedy of any person that exists or is available otherwise pursuant to that Act.
- March 2016
E & O E

